



Pricefx Accelerators

Rebate Management Package 1.2.0

November 2021

Accelerate Rebate Management Package (RMP)

The Rebate Management Package provides a solution for fast implementation of rebates. The solution includes defining and approving the rebate agreements, maintaining the rebate records and enriching the transactional data for the entire price waterfall.

The package includes:

- The 20 most common rebate types
- Approval workflow for agreements and rebate records / payout values
- Agreement output template
- Enriching sales / transactional data in PriceAnalyzer with the rebate values

In this section:

- [Rebate Management Package Overview](#)
- [Rebate Management Components](#)
- [Rebate Management Package Deployment](#)
- [Working with Rebate Management Package](#)
- [Rebate Management - Accrual Forecast](#)
- [Rebate Management Package Release Notes](#)
- [Archive of Documentation \(RMP\)](#)

Rebate Management Package Overview

- [Rebate Types](#)
- [Calculation Examples](#)
- [Rebate Records Calculation](#)

Rebate Types

List of available rebate types with their default setup. Below you will find how to modify the rebate types setup.

Type	Name	Target	Target Value	Increment	Rebate Value	Package Version
Conditional	Single Target Amount	Single	\$	N/A	\$	1.0
	Single Target Percent	Single	\$	N/A	%	1.0
	Single Volume Total Amount	Single	Total Quantity	N/A	\$	1.0
	Single Volume Total Percent	Single	Total Quantity	N/A	%	1.0
	Single Volume Per Unit	Single	Total Quantity	N/A	\$/unit	1.0

	Multi Target Amount	Multi	\$	N/A	\$	1.0
	Multi Target Percent	Multi	\$	N/A	%	1.0
Growth	Growth Absolute Amount	Multi	\$	N/A	\$	1.0
	Growth Absolute Percent	Multi	\$	N/A	%	1.0
	Growth Percent Amount	Multi	%	N/A	\$	1.0
	Growth Percent Percent	Multi	%	N/A	%	1.0
Increment	Single Increment Amount	Single	\$	\$	\$	1.0
	Single Increment Percent	Single	\$	\$	%	1.0
	Multi Increment Amount	Multi	\$	\$	\$	1.0
	Multi Increment Percent	Multi	\$	\$	%	1.0
Increment Growth	Single Increment Growth Amount	Single	%	\$	\$	1.0
	Single Increment Growth Percent	Single	%	\$	%	1.0
Fixed	Fixed Amount	N/A	N/A	N/A	\$	1.0
	Fixed Percent	N/A	N/A	N/A	%	1.0
Stepped	Stepped Amount	Multi	\$	N/A	\$	1.0
	Stepped Percent	Multi	\$	N/A	%	1.0
Linear	Linear Amount	Multi (2)	\$	N/A	\$	1.0
	Linear Percent	Multi (2)	\$	N/A	%	1.0

Calculation Examples

Single Target Amount

Inputs in the Rebate Agreement:

- Target
- Rebate Value - Amount

Example:

Target	Amount	Base Line	Rebate
\$100000	\$1000	\$110000	\$1000
\$100000	\$1000	\$90000	\$0

Single Target Percent

Inputs in the Rebate Agreement:

- Target
- Rebate Value - %

Example:

Target	%	Base Line	Rebate
\$100000	1%	\$110000	\$1100
\$100000	1%	\$90000	\$0

Single Volume Total Amount

Target (units)	Amount	Base Line	Rebate Value
1000	\$100	1100	\$100
1000	\$100	900	\$0

Single Volume Total Percent

Target (units)	%	Base Line	Rebate Calc Base Line	Rebate Value
1000	1%	1100	\$10000	\$100
1000	1%	900	\$9000	\$0

Single Volume Per Unit

Target (units)	Amount per Unit	Base Line	Rebate Value
1000	\$0.1/unit	1100	\$110
1000	\$0.1/unit	900	0

Multi Target Amount

Inputs in the Rebate Agreement:

- Target(s)
- Rebate Value(s) - Amount

Definition:

Tier	Amount
\$100000	\$100
\$150000	\$500
\$200000	\$1000

Example:

Base Line	Rebate Value
\$90000	\$0
\$110000	\$100
\$250000	\$1000

Multi Target Percent

Inputs in the Rebate Agreement:

- Target(s)
- Rebate Value(s) - %

Definition:

Tier	%
\$100000	1%
\$150000	2%
\$200000	3%

Example:

Base Line	Rebate Value
\$90000	\$0
\$110000	\$1100
\$250000	\$7500

Growth Absolute Amount

Comparison to some previous period - Month, Quarter, Year, Custom.

Inputs in the Rebate Agreement:

- Target(s)
- Rebate Value(s) - \$

Growth Tier	Amount
\$10000	\$100
\$25000	\$300
\$100000	\$10000

Growth Base Line (Current - Previous)	Rebate Value
\$5000	\$0
\$30000	\$300
\$150000	\$10000

Growth Absolute Percent

Comparison to some previous period - Month, Quarter, Year, Custom.

Inputs in the Rebate Agreement:

- Target(s)
- Rebate Value(s) - %

Growth Tier	%
\$10000	1%
\$25000	2%
\$100000	5%

Base Line	Rebate Value
\$5000	\$0
\$25000	\$500
\$150000	\$7500

Growth Percent Percent

Comparison to some previous period - Month, Quarter, Year, Custom.

Inputs in the Rebate Agreement:

- Target(s) - %
- Rebate Value(s) - %

Growth Tier %	%
2%	1%
5%	3%
10%	5%

Base Line	Calc Base Line	Rebate Value
1%	\$10000	\$0

2%	\$100000	\$1000
11%	\$100000	\$5000

Growth Percent Amount

Comparison with some previous period - Month, Quarter, Year, Custom.

Inputs in the Rebate Agreement:

- Target(s) - %
- Rebate Value(s) - \$

Growth Tier %	Amount
2%	\$1000
5%	\$10000
10%	\$25000

Base Line	Rebate Value
1%	\$0
2%	\$1000
11%	\$25000

Single Increment Amount

Inputs in the Rebate Agreement:

- Target
- Increment
- Rebate Value - \$

Definition:

Target	Increment	Amount
\$100000	\$10000	\$100

Example:

Base Line	Rebate Value
\$90000	\$0
\$110000	\$100
\$150000	\$500

Single Increment Percent

Inputs in the Rebate Agreement:

- Target
- Increment
- Rebate Value - %

Definition:

Target	Increment	%
\$100000	\$10000	1%

Example:

Base Line	Base Calc	Rebate Value
\$90000	\$0	\$0
\$110000	\$10000	\$100
\$150000	\$50000	\$500

Multi Increment Amount

Inputs in the Rebate Agreement:

- Target(s)
- Increment(s)
- Rebate Value(s) - \$

Definition:

Target	Increment	Amount
\$100000	\$10000	\$100
\$200000	\$10000	\$500

Example:

Base Line	Rebate Value
\$90000	\$0
\$110000	\$100
\$250000	$(10 * \$100) + (5 * \$500) = \$3500$

Single Increment Growth Amount

Inputs in the Rebate Agreement:

- Target(s)
- Increment(s)
- Rebate Value(s) - \$

Definition:

Target	Increment	Amount
2%	\$1,000	\$100

Example:

Previous Period	Baseline Period	Base Line Growth	Sales of Previous Period	Target Abs.	Sales of Current Period	Base Line of Payout Period	Increment	Rebate
Q1/2018	Q1/2019	11%	\$45,000	\$45,900	\$50,000	\$4,900	4	\$400
Q2/2018	Q2/2019	1%	\$45,000	\$45,900	\$45,450	0	0	\$0

Single Increment Growth Percent

Inputs in the Rebate Agreement:

- Target(s) - %
- Increment(s) - \$
- Rebate Value(s) - %

Definition:

Target	Increment	Percent
2%	\$1,000	2%

Example:

Previous Period	Base Line Period	Base Line Growth	Sales of Previous Period	Target Abs.	Sales of current Period	Base Line of Payout Period	Increment	B a s e L i n e C a l c u l a t i o n	Rebate

Q1/2018	Q1/2019	11%	\$45,000	\$45,900	\$50,000	\$4,900	4	\$4,000	\$80
Q2/2018	Q2/2019	1%	\$45,000	\$45,900	\$45,450	\$0	0	\$0	\$0

Fixed Amount

Will be added later.

Fixed Percent

Will be added later.

Stepped Amount

Inputs in the Rebate Agreement:

- Target(s) - \$
- Rebate Value(s) - \$

Definition:

Target	Amount
\$10000	\$100
\$50000	\$500
\$100000	\$5000

Example:

Base Line	Rebate Value
\$5000	\$0
\$15000	\$100
\$110000	\$100 + \$500 + \$5000

Stepped Percent

Inputs in the Rebate Agreement:

- Target(s) - \$
- Rebate Value(s) - %

Definition:

Target	%
\$10000	1%
\$50000	3%

\$100000	10%
----------	-----

Example:

Base Line	Rebate Value
\$5000	\$0
\$15000	\$150
\$110000	$(\$40000 * 1\%) + (\$50000 * 3\%) + (\$10000 * 10\%) = \$400 + \$1500 + \$1000 = \$2900$

Linear Amount

Linearly distributed rebate value between min and max target values.

Inputs in the Rebate Agreement:

- Target 1 (min value) - \$
- Target 2 (max value) - \$
- Rebate Value(s) - \$

Definition:

Target	Amount
\$10000	0
\$50000	\$500

Example:

Base Line	Rebate Value
\$10000	\$0
\$30000	\$250
\$40000	\$375
\$50000	\$500

Linear Percent

Linearly distributed rebate value between min and max target values.

Inputs in the Rebate Agreement:

- Target 1 (min value) - \$
- Target 2 (max value) - \$
- Rebate Value(s) - %

Definition:

Target	Percent
--------	---------

\$10000	0%
\$50000	1%

Example:

Base Line	Rebate Value
\$10000	\$0
\$30000	\$250
\$40000	\$375
\$50000	\$500

Rebate Records Calculation

Payout Value Calculation

Input information:

- Rebate Type: Single Target Amount
- Payment Period: Quarterly
- Target For: Annual

Target input:

- Target: 100,000.0
- Rebate: 1000.0

As the payment period is each quarter, we have 4 rebate records with the following data:

Rebate Record	Period	Period sale	Cumulative Sale
RR01	Q1	90,000	90,000
RR02	Q2	11,000	101,000
RR03	Q3	49,000	150,000
RR04	Q4	50,000	200,000

With Rebate Formulas = "**Non-Cumulative**"

If (Cumulative Sale > Target) then

rebate value = (Rebate input) / 4

end

Note: 4 stands for rebate records.

Rebate Record	Period	Rebate value
---------------	--------	--------------

RR01	Q1	0
RR02	Q2	250
RR03	Q3	250
RR04	Q4	250

With Rebate Formulas = "Cumulative"

If (Cumulative Sale > Target) then

rebate value =((Rebate input) / 4 * Current Period Index) - (Accrual Rebate)

end

Note:

- 4 stands for rebate records.
- Current Period Index starts with 1.
- Accrual Rebate is the cumulative rebate.

Rebate Record	Period	Current Period Index	Accrual Rebate	Rebate value
RR01	Q1	1	0	0
RR02	Q2	2	0	500
RR03	Q3	3	500	250
RR04	Q4	4	750	250

Rebate Management Components

- [Groovy Logic](#)
- [Rebate Type Attributes](#)
- [Publishing Templates](#)
- [Rebate Record Attribute](#)
- [Dashboard](#)
- [Price Parameter](#)
- [Advanced Configuration](#)
- [Rebate Calculation Feeder](#)
- [Rebate Allocation Feeder](#)
- [Rebate Approval Workflow](#)

Groovy Logic

Rebate Logic

- Logic name: RebateLogic
- This logic processes all rebate types. If you need to add more input/output elements for the rebate, add them in this logic.

Rebate Agreement Header Logic

- Logic name: RebateHeaderLogic
- This should be the default logic for "Default RA Header logic".
- Go to Administration > Configuration > RebateManager > RebateManager General Settings and for the 'On creating new Rebate Agreement' option select "Calculate new Agreement immediately".

Groovy Library

- Logic name: RebateManager
- This logic provides common functions used in the rebate logic.
- With each rebate type, the library should have an element with the same name (e.g. SingleTargetAmount, SingleTargetPercent). When you have new rebate types, add a new element to this library to define functions for this rebate type.

Calculation Logic

- ProductFilter_Logic
- CustomerFilter_Logic

Rebate Type Attributes





Rebate type attributes are needed for the rebate logic to calculate the rebate value and rebate records.

Rebate Type Attribute	Type	Note	Description
Pricing logic	Drop-down list		Sets a logic to run the rebate. The value should be "RebateLogic".
Rebate Type	Drop-down list		Sets a rebate type template for the current rebate type. The value is set to "Rebate Type Name" in Price Parameters below.
Target For	Drop-down list	Hidden column; use it only when there is another source defined.	Defines the target input for a period or annually. Values: "Payment Period", "Annual"
Rebate Formulas	Drop-down list	Hidden column; use it only when there is another source defined.	Defines the calculation type for a rebate value. Values: "Cumulative", "Non-Cumulative" If Target For = "Payment Period", users do not need to set a value for this attribute.
Payment Period	Drop-down list	Hidden column; use it only when there is another source defined.	Defines the payment period for a rebate type. Values: "Monthly", "Quarterly", "Semi-Annually", "Annually" If users do not set a value for this attribute, there is the "Payment Period" input in the rebate agreement with the same values.

Payout after (days)	Text field	Hidden column; use it only when there is another source defined.	Enter the number of days after the end date of the payment period when the user wants the payout.
Customer Selection	Drop-down list	Hidden column; use it only when there is another source defined.	<p>Values:</p> <ul style="list-style-type: none"> Header Level - Shows the customer group input in the header of a rebate agreement. At a line item level, the customer group input will be disabled and will inherit this value. Line Item Level - Shows the customer group input in the header of a rebate agreement and line item. Users can change the customer group value in each line item.
Product Filter Formula	Text field		<p>Name of the Product Filter Logic</p> <p>Note: Product Filter Logic must have the 'Nature' attribute set to "Product Input Filter".</p>
Source Type	Drop-down list	Hidden column; use it only when there is another source defined.	<p>Defines the type of the data source used to query data.</p> <p>Values: "DataMart", "DataSource", "Price Parameter"</p>
Rebate Base Source	Text field	Hidden column; use it only when there is another source defined.	Name of the data source.
Rebate Base Field Value	Text field	Hidden column; use it only when there is another source defined.	Field/column name in the data source which is used to calculate the base value. E.g: Revenue, Invoice Price.
Rebate Base Field Date	Text field	Hidden column; use it only when there is another source defined.	Field/column name of the pricing date in the data source.
Rebate Base Field Quantity	Text field	Hidden column; use it only when there is another source defined.	Field/column name of Quantity in the data source.
Rebate Base Field Customer	Text field	Hidden column; use it only when there is another source defined.	Field/column name of Customer Id in the data source.
Rebate Base Filed Product	Text field	Hidden column; use it only when there is another source defined.	Field/column name of Product Id in the data source.

Publishing Templates

Choose a Rebate Agreement and create for it four templates:

Name	Default	Template Input Type	Convertible to PDF	Preprocessing Logic
RA Templates		WORD		RebateAgreementReport
Last Month Rebate Report		WORD		MonthlyRebateReport
MTD Rebate Report		WORD		MonthToDateRebateReport

YTD Rebate Report		WORD		YearToDateRebateReport
-------------------	--	------	---	------------------------

Rebate Record Attribute

The following extra information is provided:

Rebate Record Attribute	Column Name	Description
attribute1	CurrentBaselineValue	Baseline value (sales or revenue ...) in this period
attribute2	CurrentRebate	Rebate value in this period
attribute3	PayTo	ID of a customer who will be paid
attribute4	CurrentBaselineQuantity	Base line quantity in this period
attribute5	ForecastBaselineValue	Forecast base line value in this period
attribute6	ForecastBaselineQuantity	Forecast base line quantity in this period
attribute7	ForecastRebate	Forecast Rebate value in this period

Dashboard

Name	Logic	Description
Rebate Agreement	Dashboard_Rebates	Shows rebates of an agreement.
Customer Rebate	Dashboard_CustomerRebates	Shows a rebate value of a customer and products from a date range.
YTD Rebate	Dashboard_RebateTypes	Shows a rebate value of each rebate type from the beginning of the year to the current date.

Price Parameter

PFXTemplate_RebateTypes

This price parameter saves the rebate type code and rebate type name. If Rebate Management Package supports a new rebate type, you need to add a new row in this table.

The value of the "Rebate Type Name" column will be shown in "Rebate Type" in the Rebate Type Attribute section.

Column Name	Description
Rebate Type Code	Must match the element name in Groovy Library "RebateManager".

Rebate Type Name	Will be shown in "Rebate Type".
------------------	---------------------------------

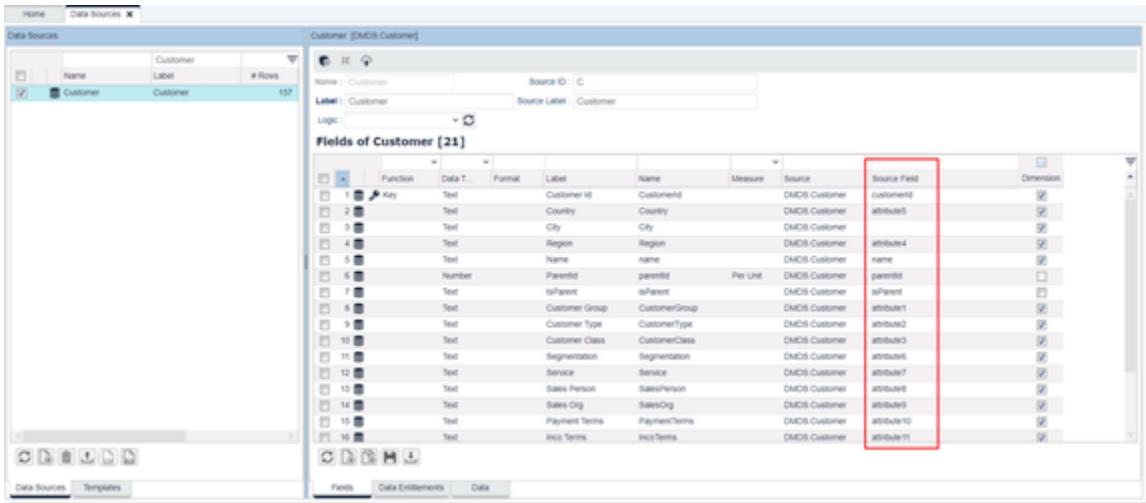
PFXTemplate_Customer_MappingDatamartFieldName

This price parameter maps Customer Master attribute (source field) with the Datamart field name.

⚠️ You should **check it and update** based on the Customer master structure in your partition.

Column Name	Description
Name	Attribute name (source field) in Customer Master
Datamart Field Name	Map with a field name in Datamart
Description	Description of this mapping (if any)

Note: You can get the source field in the Customer data source as shown below to fill in to the 'Name' column.



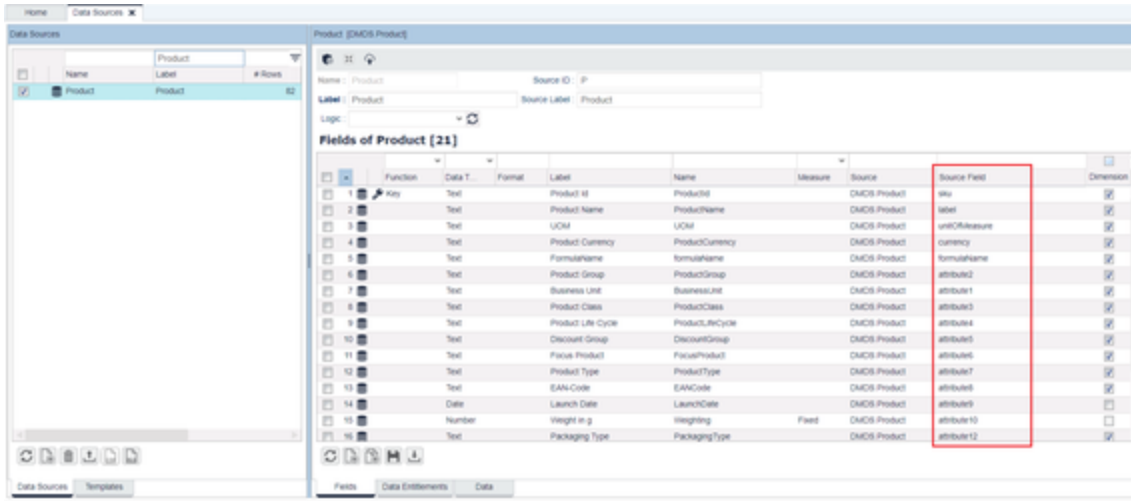
PFXTemplate_Product_MappingDatamartFieldName

This price parameter maps the Product Master attribute (source field) with the Datamart field name.

You should **check it and update** based on the Product master structure in your partition.

Column Name	Description
Name	Attribute name (source field) in Product Master
Datamart Field Name	Map with a Field Name in Datamart
Description	Description of this mapping (if any)

Note: You can get the source field in the Product data source as shown below to fill in to the 'Name' column.



Advanced Configuration

The element name "rebate-manager-accelerator" (to define configuration data) can be overridden on the rebate type level:

Name	Description
SourceType	Optional values: "DataMart", "DataSource", "Price Parameter"
SourceName	Name of Datamart / Data Source / Price Parameter used to query and allocate the rebate value
RebateBaseFieldValue	Field name of Value Base which is used to calculate the base value
RebateBaseFieldQuantity	Field name of Quantity which is used to calculate the base value
RebateBaseFieldDate	Field name of the pricing date
RebateBaseFieldCustomerID	Field name of Customer ID
RebateBaseFieldProductID	Field name of Product ID
CustomerFilterFormula	Logic name of Customer Filter Logic
CustomerSelection	Options: Header Level / Line Item Level
Payout After Day	Number of days after the end date of the payment period when the user wants the payout
Payment Period	Options: Monthly / Quarterly / Semi-Annually / Annually If it is left empty, it will be populated on the line item level.
Target For	Options: Payment Period / Annual

Sample of "rebate-manager-accelerator":

```
{
  "SourceType": "DataMart",
  "SourceName": "Stramit",
  "RebateBaseFieldValue": "SalesValue",
  "RebateBaseFieldQuantity": "SalesQty",
  "RebateBaseFieldDate": "OrderDate",
  "RebateBaseFieldCustomerId": "CustomerNumber",
  "RebateBaseFieldProductId": "ItemNumber",
  "CustomerFilterFormula": "CustomerFilter_Logic",
  "CustomerSelection": "Line Item Level",
  "PayoutAfterDay": 3,
  "PaymentPeriod": "",
  "TargetFor": "Annual",
  "RebateFormulas": "Cumulative"
}
```

Rebate Calculation Feeder

- Logic name: RebateRecordCalculationFeeder
- Finds and calculates rebate records.

Rebate Allocation Feeder

- Logic name: RebateAllocationFeeder
- Allocates a rebate value into a transaction Datamart.

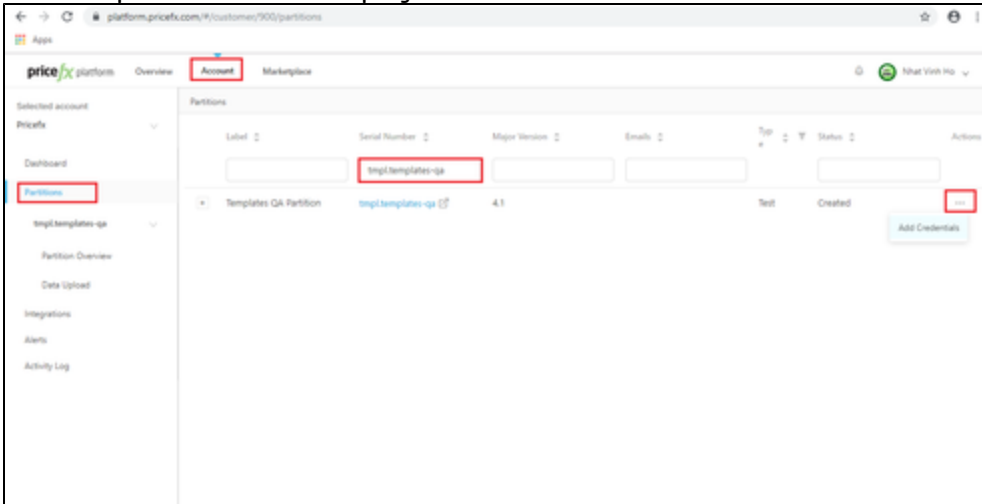
Rebate Approval Workflow

- It is done using Approval Workflow Library. For details see [Accelerate Approval Workflow Package \(AWP\)](#).
- Rebate Agreement Approval Workflow
 - Workflow logic name: rebateagreement
- Rebate Record Approval Workflow
 - Workflow logic name: rebaterecord

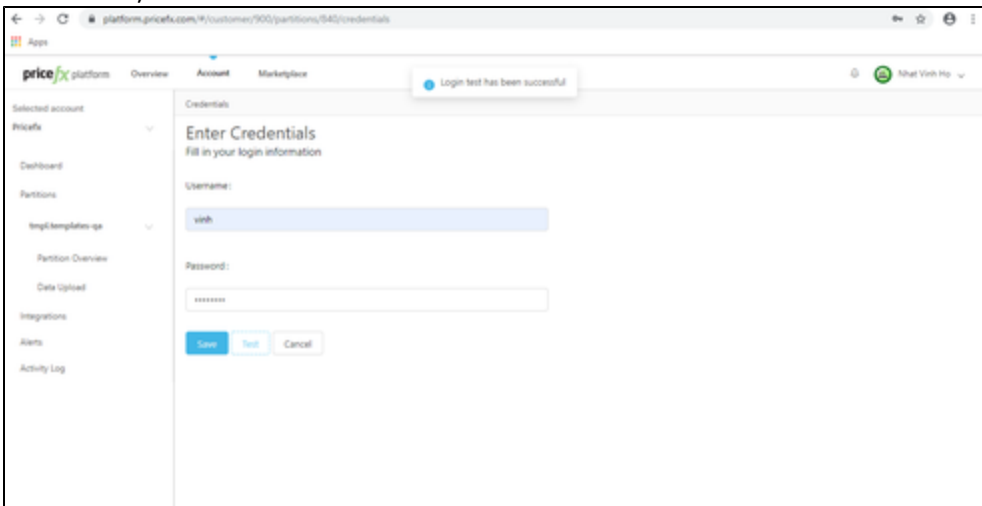
Rebate Management Package Deployment

The easiest way to deploy Rebate Management Package to a partition is via PlatformManager.

1. Access PlatformManager at <https://platform.pricefx.com/> and log in with your account or using 0365.
2. Specify credentials for the partition where you want to deploy the package.
 - a. Go to Account and make sure your account is selected.
 - b. Find the partition for the deployment.

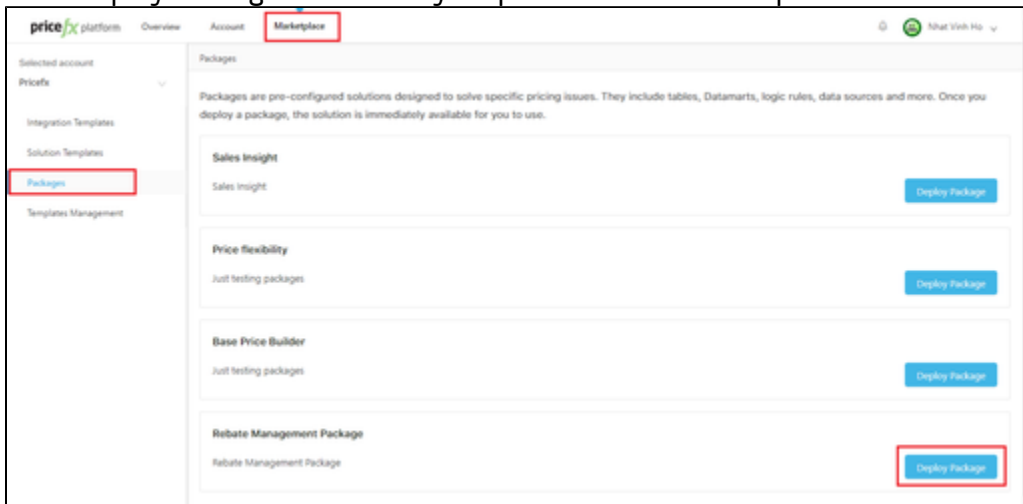


- c. Click 'Actions' and select 'Add Credentials'.
- d. Enter the username and password and click 'Test' to verify the connection. If testing was successful, click Save.

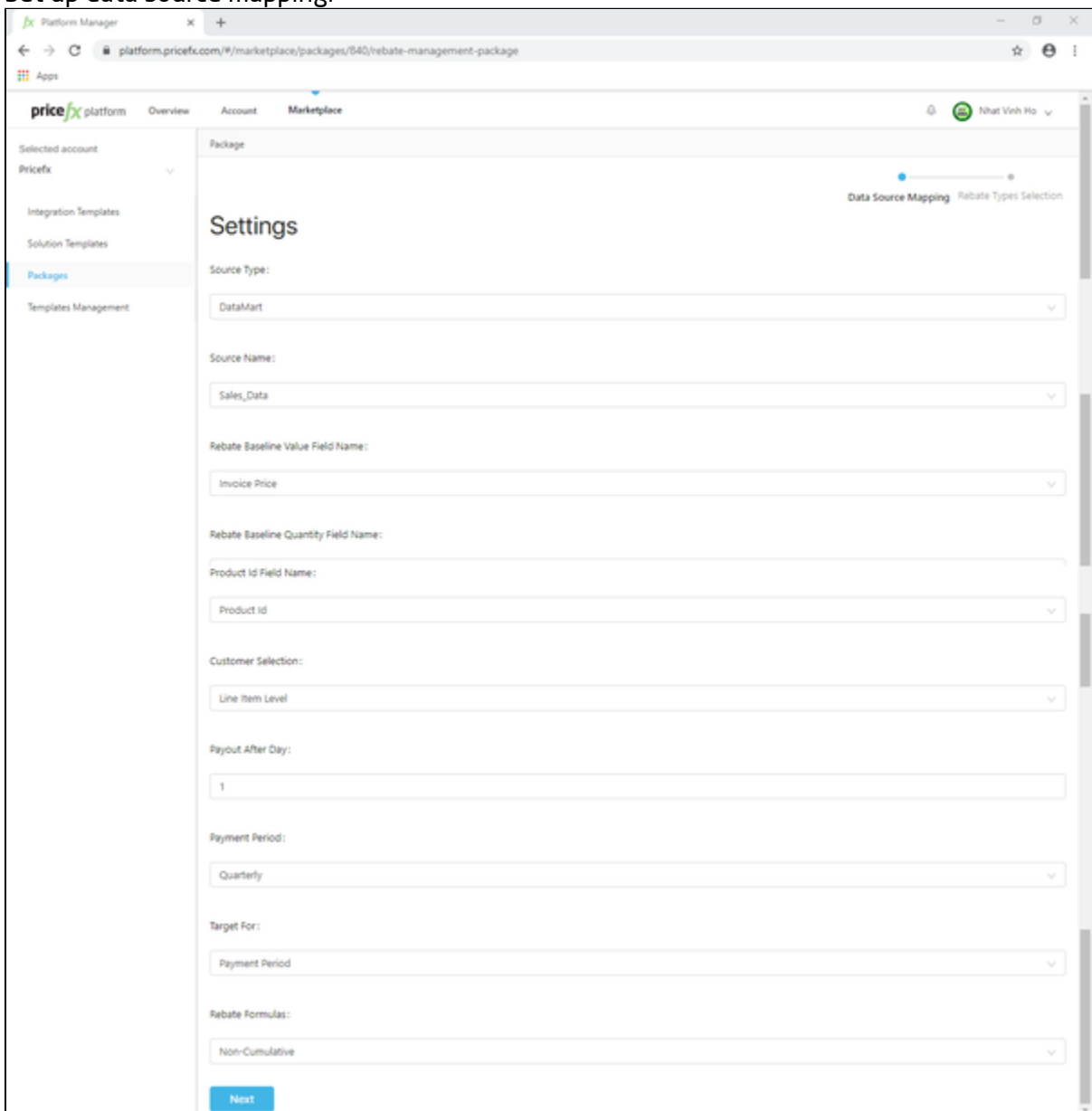


3. Deploy the package.
 - a. Go to Marketplace > Packages.
 - b. Find Rebate Management Package.

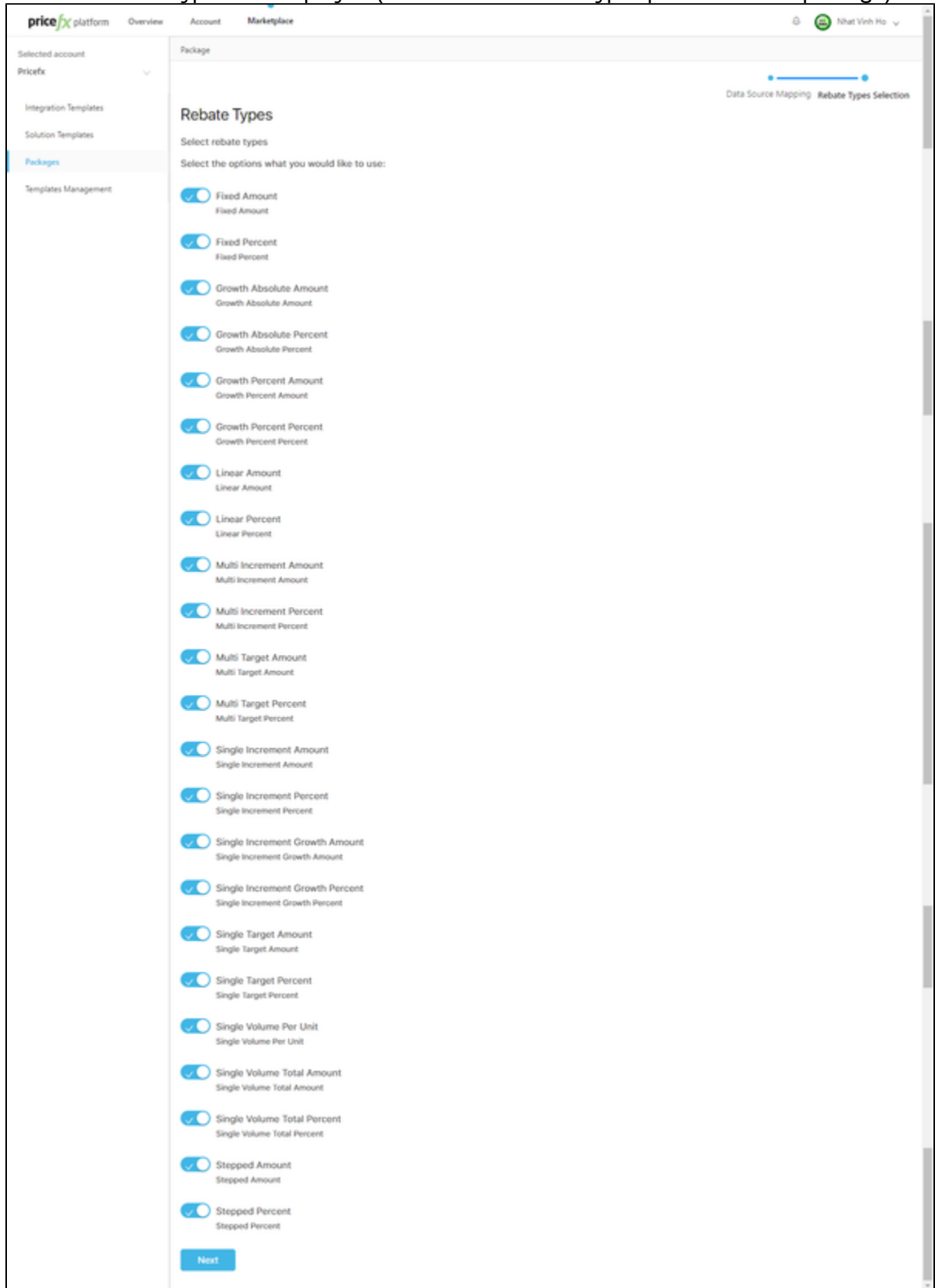
c. Click 'Deploy Package' and select your partition from the dropdown list.



d. Set up data source mapping.



e. Select a Rebate Type to be deployed (from a list of rebate types provided in the package).




4. The deployment is complete.

Notes

Currently, PlatformManager supports the following components for deployment:

- Calculation Logic
 - Groovy Library
 - ApprovalWorkflow
 - RebateManager
 - SharedLib
 - Rebate Header Logic
 - RebateHeaderLogic
 - Rebate Logic
 - RebateLogic
 - Generic Logic
 - RebateRecordCalculationFeeder
 - RebateAllocationFeeder
 - CustomerFilter_Logic (logic with Nature = "Customer Input Filter")
 - ProductFilter_Logic (logic with Nature = "Product Input Filter")
 - RebateAgreementReport
 - MonthlyRebateReport
 - MonthToDateRebateReport
 - YearToDateRebateReport
 - Dashboard_RebateTypes
 - Dashboard_CustomerRebates
 - Dashboard_Rebates
 - PriceAnalyzer Logic
 - RebateAllocation (to allocate rebates into transaction Datamart)
 - Workflow Formula
 - rebateagreement (Rebate agreement approval logic)
 - rebaterecord (Rebate record approval logic)
 - Price Parameter
 - Approvers (used in approval workflow)
 - ApprovalWorkflowSetup (used in approval workflow)
 - ApprovalCondition (used in approval workflow)
 - PFXTemplate_RebateTypes (defines a list of rebate types)
 - PFXTemplate_Product_MappingDatamartFieldName (mapping between Product / Product Extension attributes and Datamart fields, supports a filter on Product Extensions)
 - PFXTemplate_Customer_MappingDatamartFieldName (mapping between Customer / Customer Extension attributes and Datamart fields, supports a filter on Customer Extensions)
 - Dashboards
 - RebateAgreement (Rebate Agreement Dashboard)
 - CustomerRebate (Customer Dashboard)
 - YTDRebateTypes (YTD by Rebate Type Dashboard)

Manual Steps

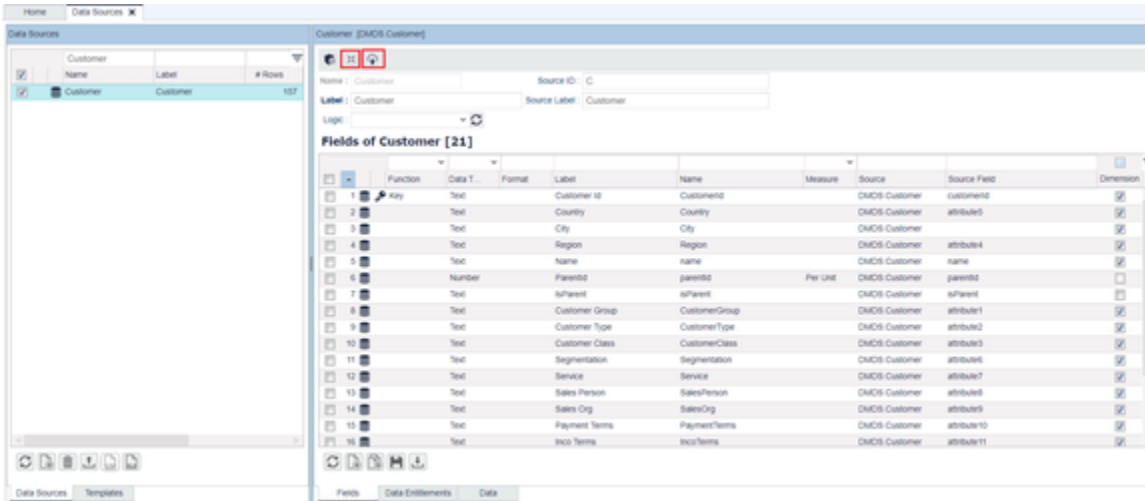
 The current version of PlatformManager does not support deployment of the following components, so you must deploy them manually.

Synchronize Product and Customer (optional)

If data and meta data of customers (C) and products (P) in your partition are synced, you can skip this step.

Synchronize Meta data

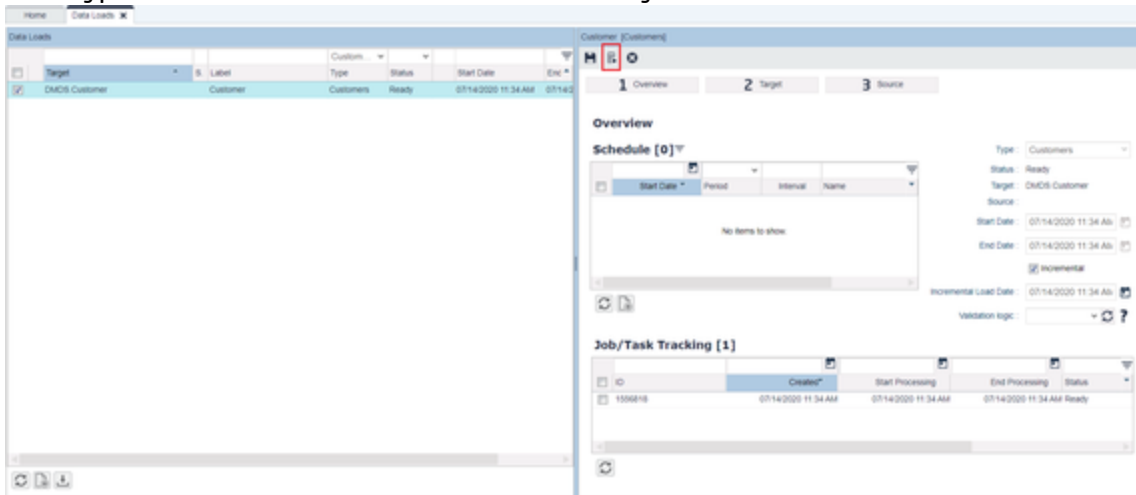
1. Go to PriceAnalyzer > Data Manager > Data Sources.
2. Select Customer > click the Sync Meta icon and click the Deploy icon.



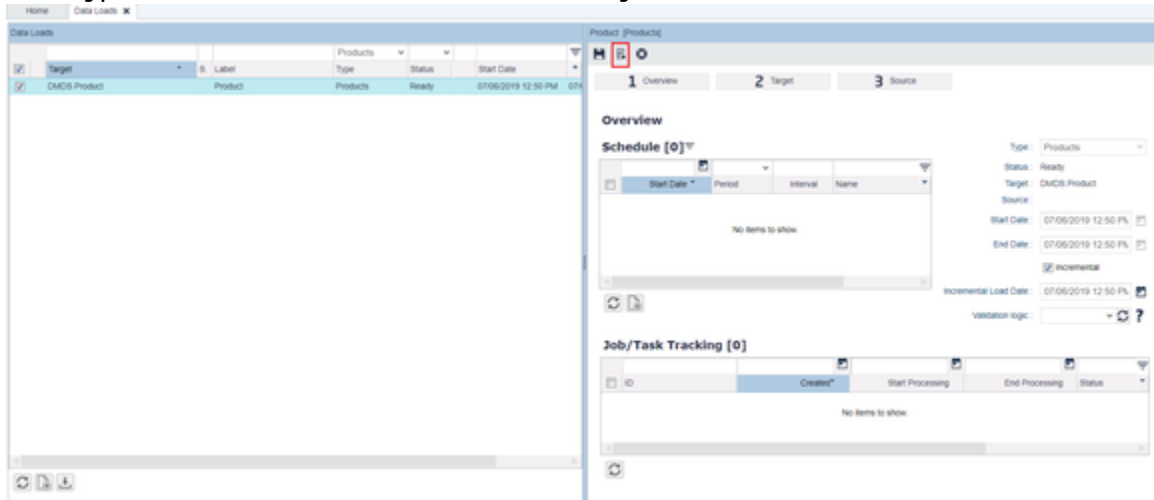
Repeat the same steps for Product.

Synchronize Data

1. Go to PriceAnalyzer > Data Manager > Data Loads.
2. Find Type = Customers and click the Run icon to sync data.



3. Find Type = Products and click the Run icon to sync data.



Check Mapping Field in Price Parameters

To be able to apply a Customer filter input and Product filter input in a rebate agreement, you need to update the mapping fields between Product/Customer master and Datamart fields.

Based on the Datamart structure and Product/Customer master in your partition, you need to update or add more mapping in two PP tables:

- PFXTemplate_Product_MappingDatamartFieldName
- PFXTemplate_Customer_MappingDatamartFieldName

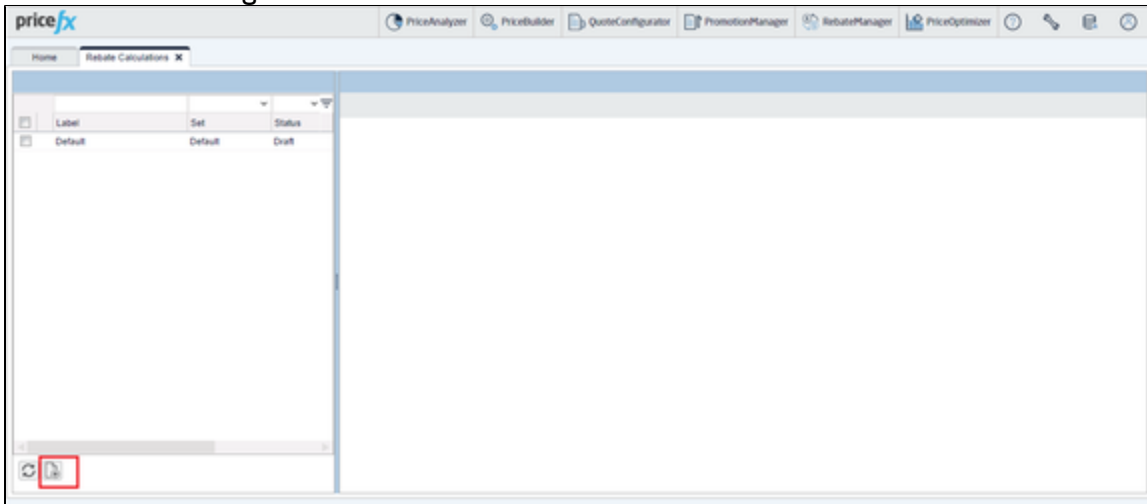
Example: This is mapping in the "PFXTemplate_Customer_MappingDatamartFieldName" table:

- Column "Name" = "Source field" in the customer data source.
- Column "Datamart Field Name" = Datamart field name.

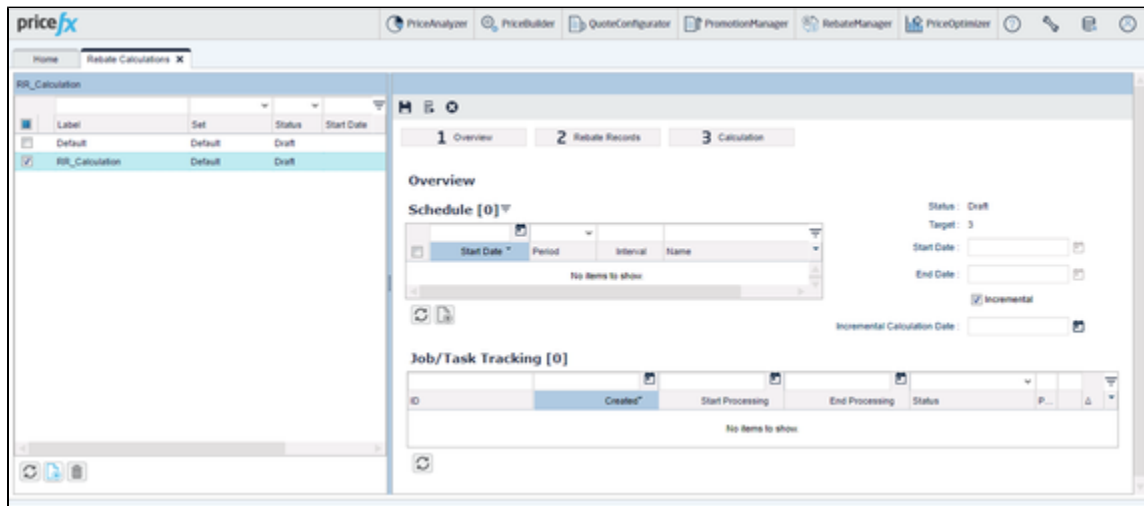
Name	Datamart Field Name	Description
CustomerCashDiscount__attribute1	Quantity	Just sample
attribute1	CustomerGroup	
attribute2	CustomerType	
attribute3	CustomerClass	
attribute4	Region	
attribute5	Country	
attribute6	Segmentation	
attribute7	Service	
attribute8	SalesPerson	
attribute9	SalesOrg	
attribute10	PaymentTerms	
attribute11	IncoTerms	
attribute12	CustomerCurrency	
attribute13	CustomerInfo	
attribute14	BuyingGroup	

Rebate Calculation

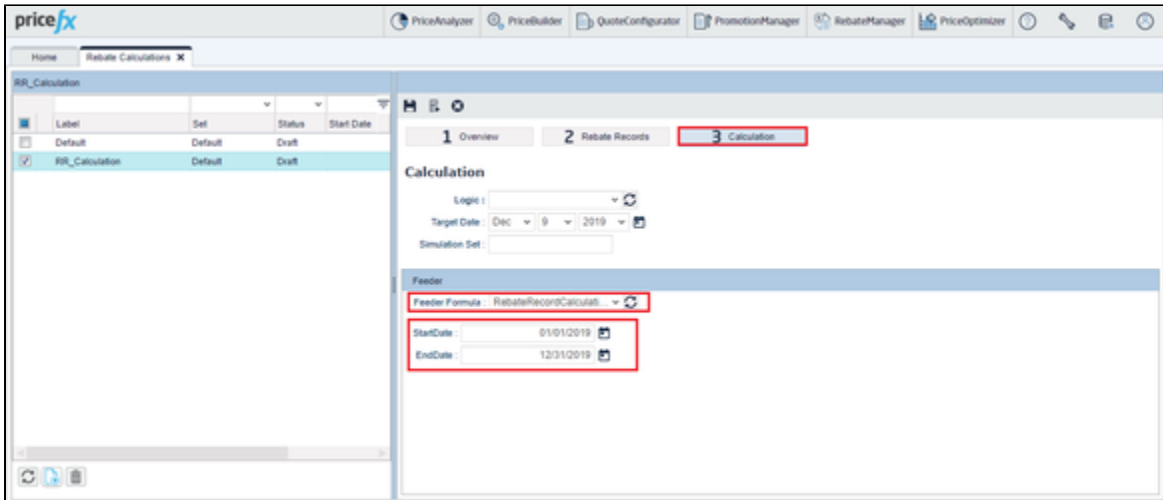
1. Go to RebateManager > Rebates Calculations and add a rebate calculation.



2. Enter a label "RR_Calculation".

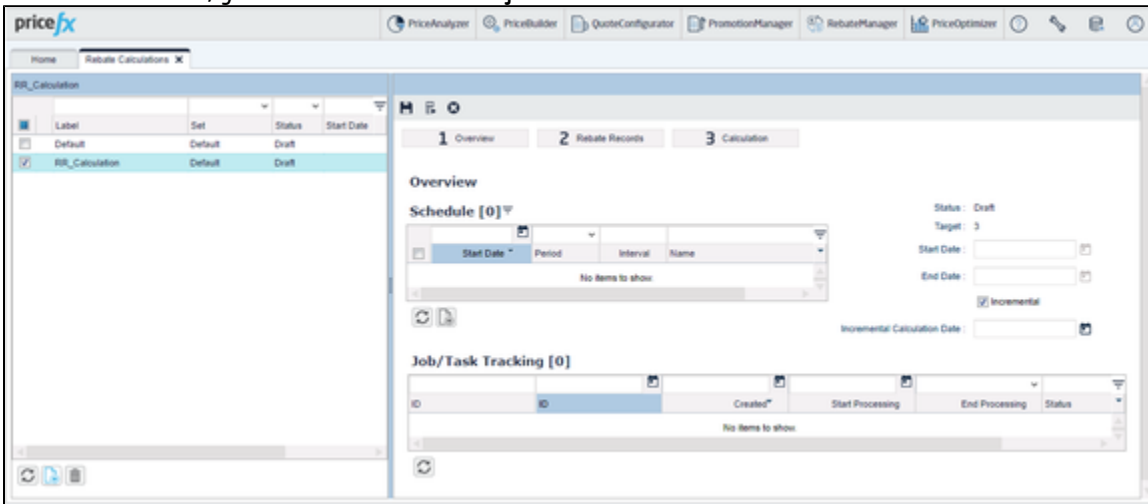


1. Select this Rebate Calculation and click the '3 Calculation' button.
2. As Feeder Formula choose "RebateRecordCalculationFeeder" and enter StartDate and EndDate.



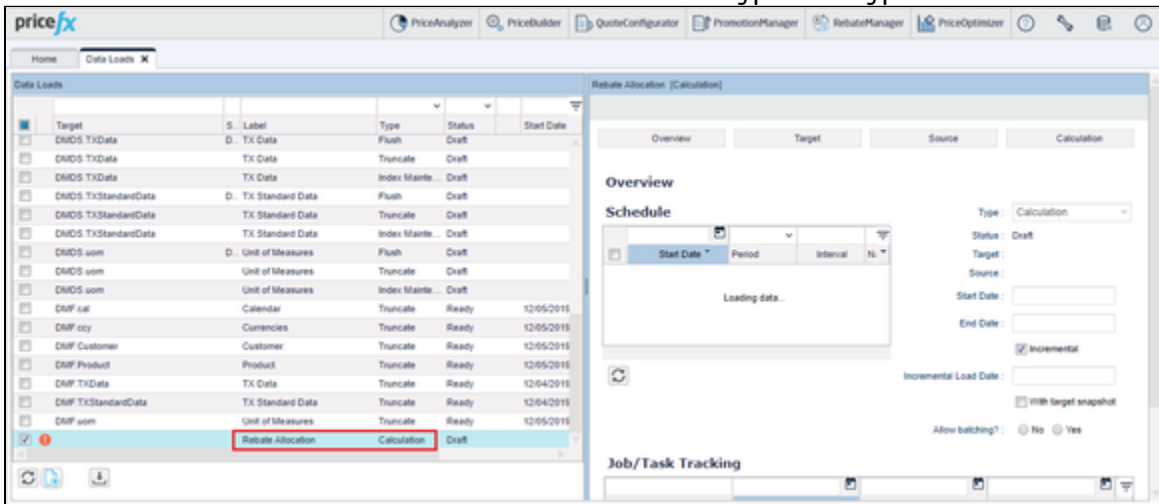
3. Save the settings.

In the Overview, you can schedule this job to run at a suitable interval.

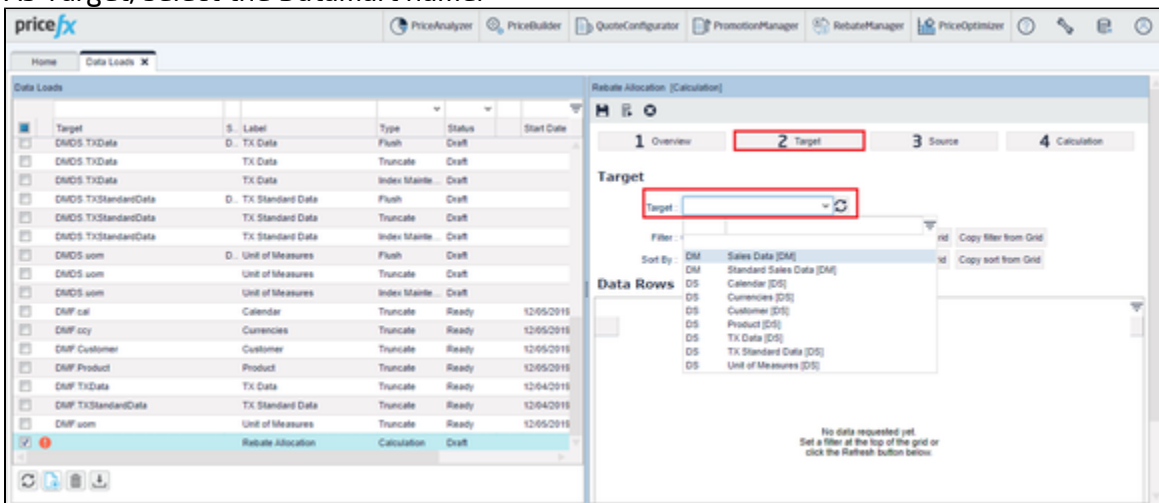


Rebate Allocation

1. Go to PriceAnalyzer > Data Manager > Data Loads.
2. Add new a Data Load and enter the Data Load label and type. The type must be "Calculation".

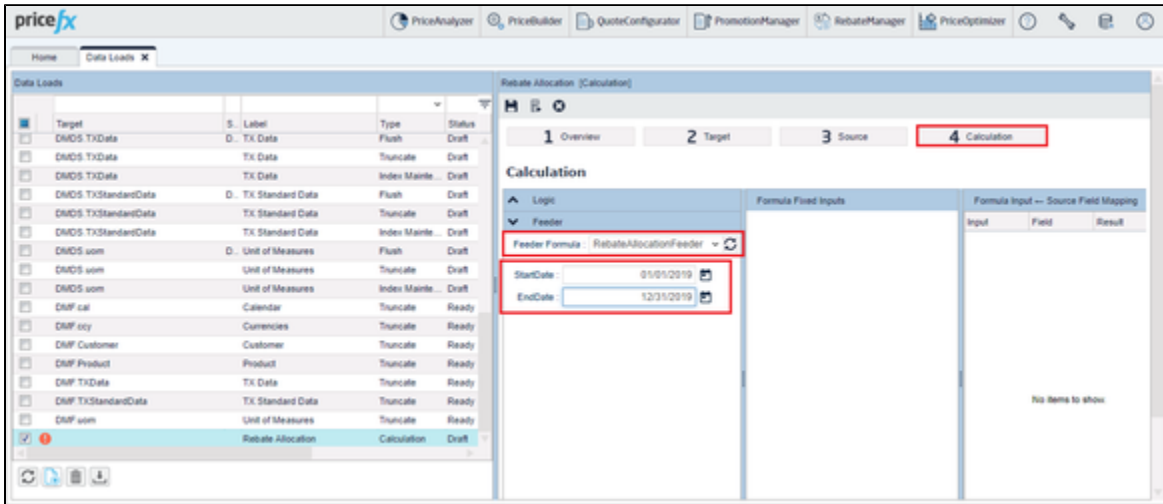


3. In the right window select the Target section.
4. As Target, select the Datamart name.

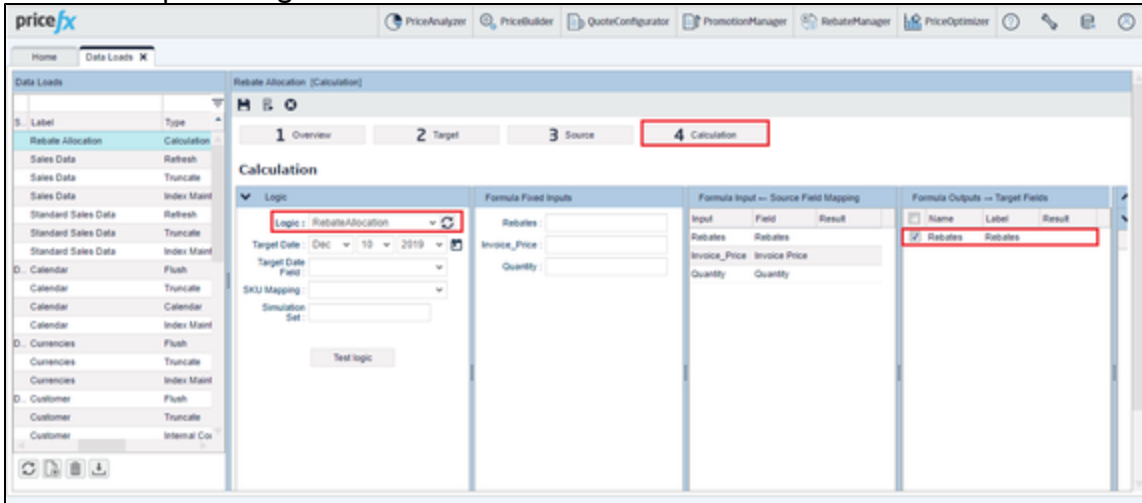


5. Go to the Calculation section.

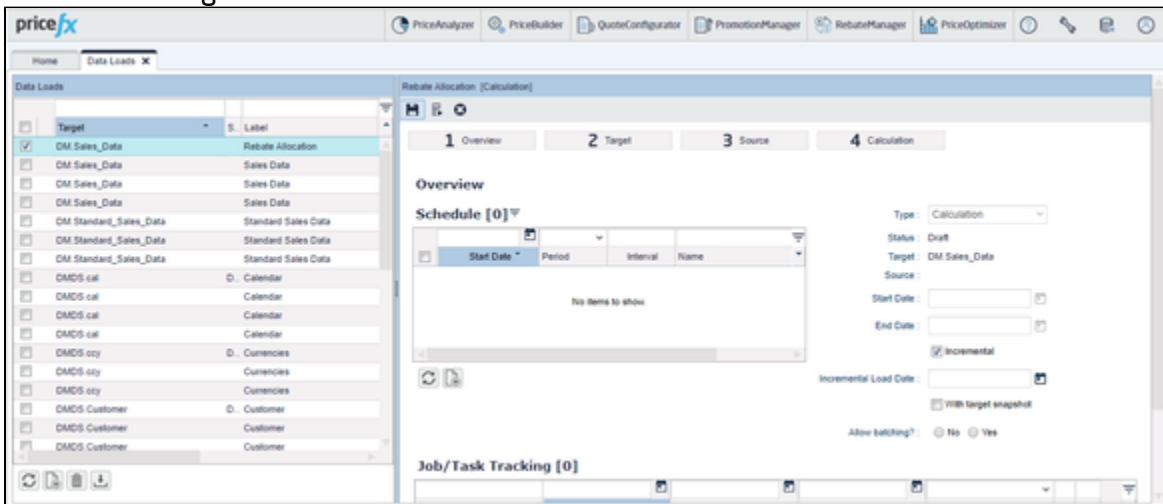
6. As Feeder Formula select "RebateAllocationFeeder" and enter StartDate and EndDate.



7. In the Logic section, select "RebateAllocation" as Logic and check the "Rebates" checkbox in the Formula Outputs Target Fields column.



8. Save the settings.



You can also schedule to run the Data Load every day.

Publishing Templates

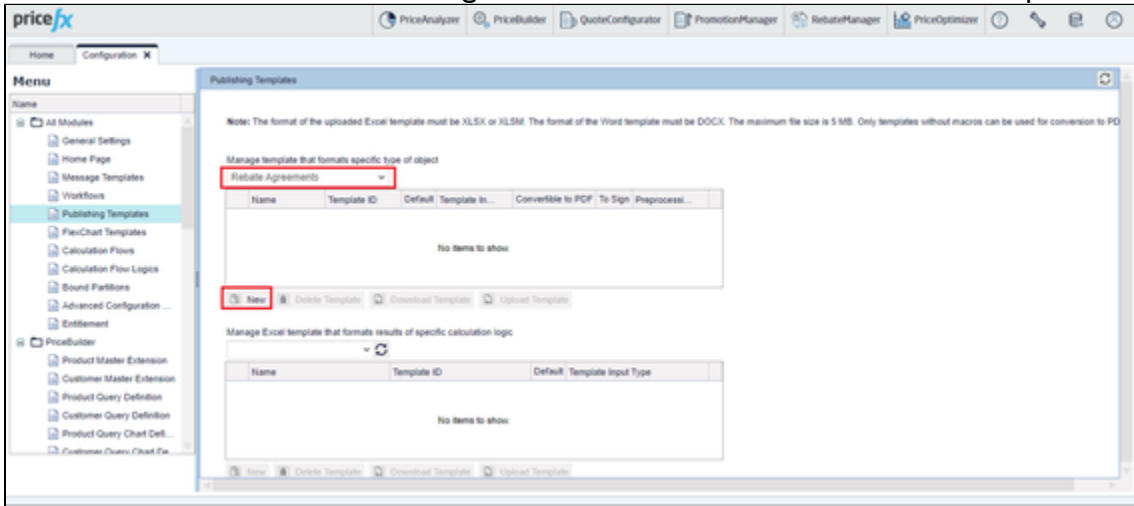
You need to deploy the following templates:

- Rebate Agreement Report (RBA Report)
- Last Month Rebate Report
- Month To Date Rebate Report (MTD Rebate Report)
- Year To Date Rebate Report (YTD Rebate Report)

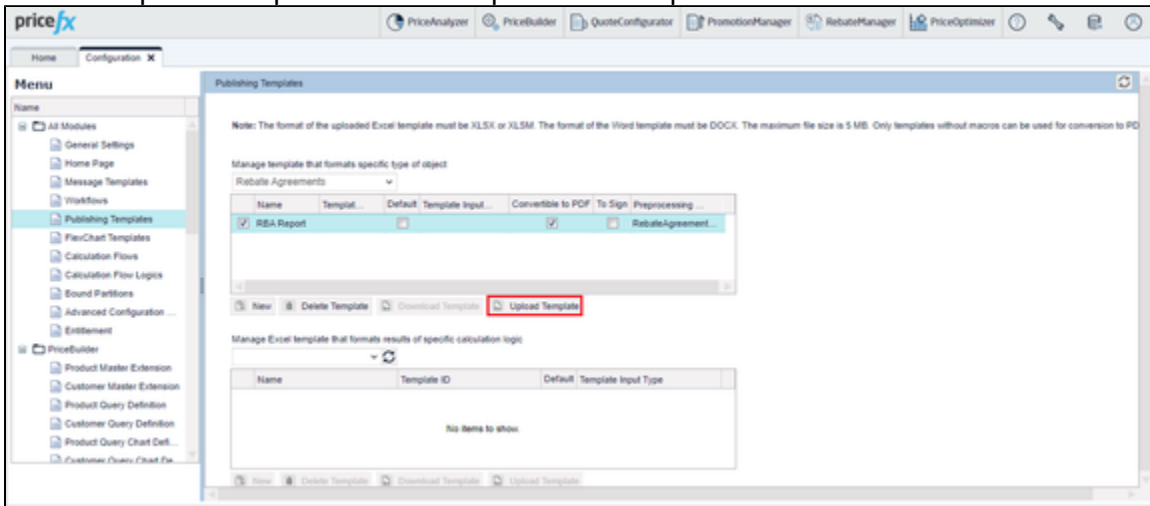
Template files are stored at: <https://gitlab.pricefx.eu/accelerators/rebate-manager-accelerator/-/tree/master/PublishingTemplates>

To deploy a template:

1. Go to Administration > Configuration > All Modules > Publishing Templates.
2. In the first section select "Rebate Agreements" and click New to add a new template.

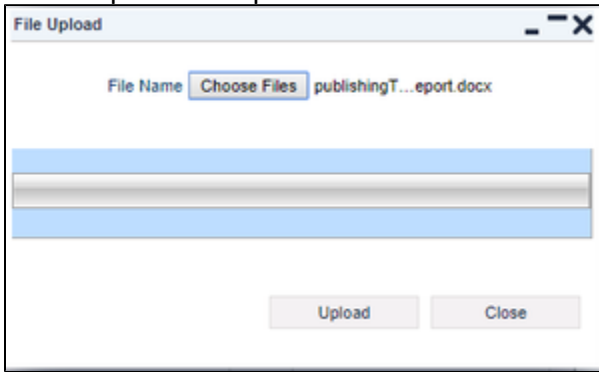


3. Enter the following information:
 - a. Name: RBA Report
 - b. Convertible to PDF: checked
 - c. Preprocessing Logic: RebateAgreementReport
4. Click the Upload Template button to upload the template file.

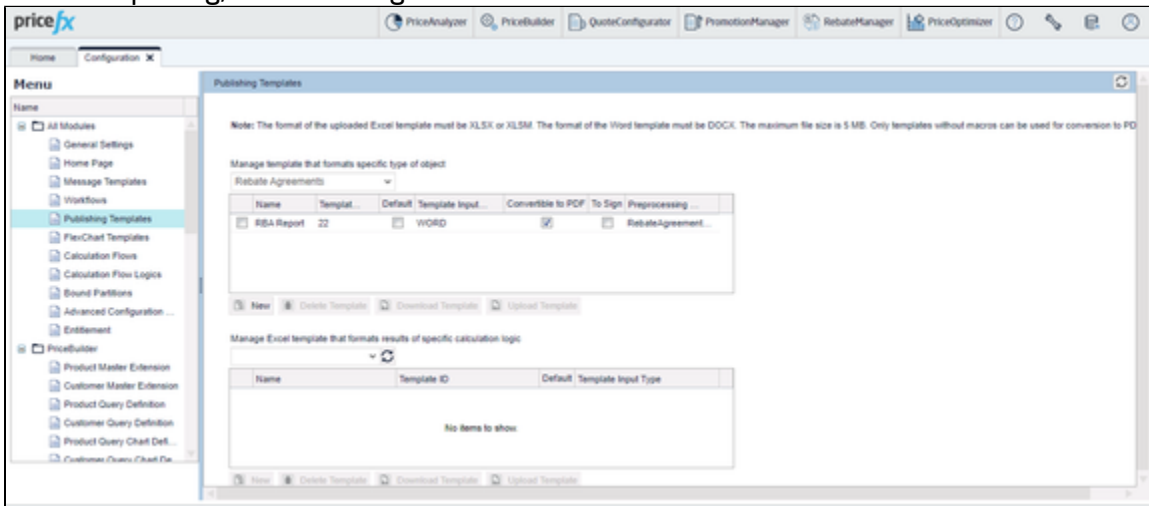


5. Choose the template file "publishingTemplates_RBA_RBA Report.docx" in Rebate Management Package.

6. Select Upload to import the file.



7. After completing, the following information will be shown:



Repeat the same steps for other templates:

Name	Convertible to PDF	Preprocessing Logic	Template File Name
Last Month Rebate Report	✓	MonthlyRebateReport	publishingTemplates_RBA_Last Month Rebate Report.docx
MTD Rebate Report	✓	MonthToDateRebateReport	publishingTemplates_RBA_MTD Rebate Report.docx
YTD Rebate Report	✓	YearToDateRebateReport	publishingTemplates_RBA_YTD Rebate Report.docx

Working with Rebate Management Package

- [User Roles](#)
- [Define Rebate Type](#)
- [Create Rebate Agreement](#)
- [Rebate Records](#)
- [Rebate Calculation](#)
- [Rebate Allocation](#)

- [Rebate Approval Workflow](#)

User Roles

To use the Rebate Management Package, you need to have the following Pricefx user roles:

<input type="checkbox"/> REBATEMANAGER
<input type="checkbox"/> Administer Rebate Agreements
<input type="checkbox"/> Administer Rebate Records
<input checked="" type="checkbox"/> Administer RebateManager
<input type="checkbox"/> Manage Rebate Agreement Templates
<input checked="" type="checkbox"/> Manage Rebate Agreements
<input type="checkbox"/> Manage Rebate Calculation Logics
<input type="checkbox"/> Manage Rebate Records
<input checked="" type="checkbox"/> View Rebate Records

If you don't want a user to manage rebate types, you need to remove the user role "Administer RebateManager".

Define Rebate Type

Go to RebateManager > Rebate Types, add a new rebate type, and define its properties:

Name	Name of the rebate type
Label	Label of the rebate type
Pricing Logic	Should be "RebateLogic"
Rebate Type	Maps your rebate logic with an existing rebate type template. Select here a suitable rebate type. Currently, there are more than 20 rebate types implemented. See their list at Rebate Management Package Overview .
Target for	Maps your rebate logic with an existing rebate type template. Select one of these options: <ul style="list-style-type: none"> • Payment Period - Gets sales for every period to compare and calculate the rebate. • Annual - Gets sales for the whole year to compare and calculate the rebate.
Rebate Formulas	If 'Target for' is 'Annual', you need to define how to calculate the rebate value: <ul style="list-style-type: none"> • Non-Cumulative - The rebate value is calculated for the current period based on cumulative sales, then divided by the number of periods (12 months or 4 quarters, 2 for semi-annually, 1 year). • Cumulative - The same as with calculation of Non-Cumulative above, but the rebate value of the previous period is excluded.

Payment Period	<p>Maps your rebate logic with existing rebate type templates. Select: "Monthly", "Quarterly", "Semi-Annually" or "Annually".</p> <p>If left empty, there is the "Payment Period" input in the rebate agreement with the same values.</p>
Payout after (days)	<p>Enter the number of days after the end date of the payment period when you want the payout.</p> <p>If left empty, it is set to 1 day.</p>
Customer Selection	<p>Options are:</p> <ul style="list-style-type: none"> • Header Level - Shows the customer group input in the header of a rebate agreement. At the line item level, the customer group input will be disabled and will inherit values from the header. • Line Item Level - Shows the customer group input both for the rebate agreement header and line items. If users change the value of the customer group for each line item, it takes priority over the header input value.
Product Filter Formula	<p>Name of Product Filter Logic (suggested: ProductFilter_Logic).</p> <p>You can change the product filter as you want in this logic, so that you get the products you need in the rebate agreement.</p>

These are the default values of some of the attributes in Advanced Configuration, so that users do not need to define them from scratch in each rebate type:

```
{
  "SourceType": "DataMart",
  "SourceName": "Source1",
  "RebateBaseFieldValue": "SalesValue",
  "RebateBaseFieldQuantity": "SalesQty",
  "RebateBaseFieldDate": "OrderDate",
  "RebateBaseFieldCustomerId": "CustomerNumber",
  "RebateBaseFieldProductId": "ItemNumber",
  "CustomerFilterFormula": "CustomerFilter_Logic",
  "CustomerSelection": "Line Item Level",
  "RebateFieldName": "Rebates", // used for customer rebate dashboard
  "PayoutAfterDay": 3,
  "PaymentPeriod": "",
  "TargetFor": "Annual",
  "RebateFormulas": "Cumulative"
}
```

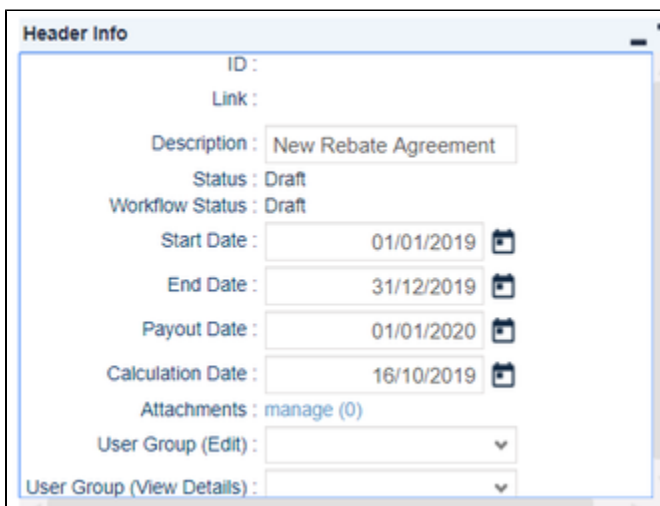
Options:

- **PaymentPeriod** - By default empty, it will then be populated on the line item level.
Note: These attributes will be hidden in Rebate Types. If users define them in Rebate Types, these settings will be used, otherwise Advanced Configuration settings are used.

- **Pay To Input** - It is based on Customer Selection and is also applied to Customer Filter Logic if this attribute is set.
 - If CustomerSelection = "Header Level", Pay To input will be disabled for all line items and will be inherited from the header.
 - If CustomerSelection = "Line Item Level", Pay To input will be in both on the Header level and Line Item level. If you have Pay To on the Header level in this case, line items will not inherit from that. If you choose one rebate type with CustomerSelection = "Header Level", PayTo will be disabled for line items for only this rebate type.
- **Customer/Product Filter Logic** - If you want to set a filter for customers/products, you can use Customer Filter Logic or Product Filter Logic. Go to Calculation Logic, choose ProductFilter_Logic or/and CustomerFilter_Logic, and the input data that you want to filter.
 - Customer Filter Logic is set in Advanced Configuration.
 - Product Filter Logic is set in a Rebate Type in the Product Filter Formula column for a specific rebate type.

Create Rebate Agreement

Go to RebateManager > Rebate Agreements and create a new Rebate Agreement.



The screenshot shows a 'Header Info' form with the following fields and values:

- ID :
- Link :
- Description : New Rebate Agreement
- Status : Draft
- Workflow Status : Draft
- Start Date : 01/01/2019
- End Date : 31/12/2019
- Payout Date : 01/01/2020
- Calculation Date : 16/10/2019
- Attachments : manage (0)
- User Group (Edit) :
- User Group (View Details) :

User input

- Start Date - Enter the start date of the period for the analysis.
- End Date - Enter the end date of the period for the analysis.
- Payout Date - Enter the payout date (not mandatory input because now we get the payout date in your Rebate Type in the 'Payout after (days)' column).

Header level:

Input parameters [New Rebate Agreement]

Customer(s):

Line item level:

Input parameters [Single Target Amount]

Customer(s):

Product(s):

Target: !

Rebate: !

Payment Period: !

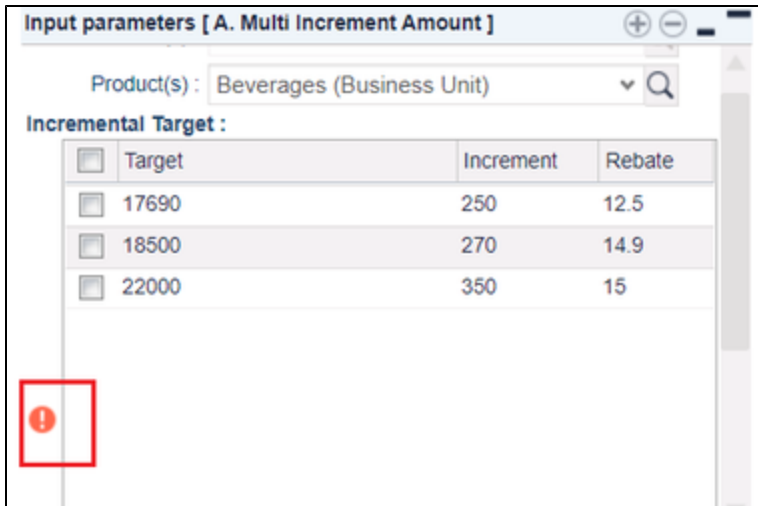
Pay To:

Click the 'Add Line Item' button and choose the Rebate Type you want to add and enter a value at the Line Item Level.

You can set the following inputs:

- Customer(s) - Allows you to choose one or more customers for the analysis.
- Product(s) - Allows you to choose one or more products for the analysis.
- Target - Allows you to enter the target for a specific Rebate Type.
- Rebate - Allows you to enter the rebate for a specific Rebate Type.
- Payment Period - Allows you to choose a period (Monthly, Quarterly, Semi-Annually, Annually). It will be disabled if you set this in Advanced Configuration Options
- Pay To - Allows you to choose a specific customer you want to pay to.

⚠ There will be a warning ! shown if you do not enter the required inputs Target, Rebate, Payment Period, etc. However, for two rebate types (Multi Increment Amount, Multi Increment Percent) this warning will show even if you already entered all values. You can still submit normally.



The system will show a warning message if users enter a negative value (except value 0). The sample format is ValidateInput: Multi Increment Percent - Target must be greater than 0.

Calculation Results:

Calculation Results	
Label	Calculation Result
Rebates Detail	
Baseline Value Field Label	Invoice Price
Previous Baseline Value	118,755.38
Current Baseline Value	149,026.61
Previous Rebate	450.00
Current Rebate	600.00
Forecast	
Forecast Baseline Value	174,079.12
Forecast Rebate	600.00
Rebate Records	
Create Rebate Records	[...]
Rebate Type Info	
Target For	Payment Period
Rebate Formulas	Non-Cumulative
Payment Period	Monthly
Pay To	
Customer(s)	('Region' = "Asia")
Product(s)	('BusinessUnit' = "Beverages")

Calculation Results	
Label	Calculation Result
Rebates Detail	
Baseline Value Field Label	Invoice Price
Baseline Quantity Field Label	Quantity
Previous Baseline Value	118,755.38
Current Baseline Value	149,026.61
Previous Baseline Quantity	21,076
Current Baseline Quantity	24,001
Previous Rebate	20,782.19
Current Rebate	26,079.66
Forecast	
Forecast Baseline Value	174,079.12
Forecast Quantity	28,447
Forecast Rebate	30,463.85
Rebate Records	
Rebate Type Info	
Target For	Payment Period
Rebate Formulas	Non-Cumulative
Payment Period	Quarterly
Pay To	
Customer(s)	('Region' = "Asia")
Product(s)	('BusinessUnit' = "Beverages")

Rebate Detail:

- Baseline Value Field Label - Shows the field label to use for calculating the Baseline Value.
- Baseline Quantity Field Label (*) - Shows the field label to use for calculating the Quantity.
- Previous Baseline Value - Total sales for a validity period of the agreement - 12 months.
- Current Baseline Value - Sum of the Current Baseline Value from the rebate records.
- Previous Baseline Quantity (*) - Total quantity for a validity period of the agreement - 12 months.
- Current Baseline Quantity (*) - Sum of the Current Quantity from the rebate records.
- Previous Rebate - Rebate value based on sales from the previous period (current contract validity - 12 months) and current conditions.
- Current Rebate - Sum of the current rebates from the rebate records.

Forecast:

- Forecast Baseline Value - Sum of the Forecast Baseline Value from the rebate records.
- Forecast Quantity (*) - Sum of the Forecast Quantity from the rebate records.
- Forecast Rebate - Sum of the Forecast Rebate from the rebate records.

How to calculate the forecast (simple calculation based on historical and current data):

		Previous
Start Date	1/1/2019	1/1/2018
End Date	12/31/2019	12/31/2018
End Date - Start Date (a)	365	365
Previous Baseline Value (b)	118,755.38	
Productivity per day (b/a)	325.3572089	
Previous Quantity (c)	21,076.00	
Quantity Productivity per day (c/a)	57.74246575	

Forecast Baseline Value = Total Current Baseline Value + Forecast from Current Date to End Date
(Number of days * Productivity per day)

Forecast Quantity = Total Current Baseline Quantity + Forecast from Current Date to End Date
(Number of days * Quantity Productivity per day)

(*): This element will only show when you choose one of these rebate types: Single Volume Total Amount, Single Volume Total Percent, Single Volume Per Unit.

Color coding:

- Previous Rebate: **Blue**
- Current Rebate > Previous Rebate: **Green**, else **Red**
- Rebate Forecast/ **Accrual Forecast** > Current Rebate: **Green**, else **Red**
- If value does not change, it will be **Dark Orange**

Output values are displayed as rounded (to no decimals) in Calculation Results for both Rebate Agreement and Rebate Records. If these outputs are part of further calculations, the original (un-rounded) values are used.

Rebate Records

Go to RebateManager > Rebate Records. Choose the Source ID that you want to check. This will show a rebate record for each period you already set before (Monthly, Quarterly, Semi-Annually, Annually).

- Previous Baseline Value - Total sales for the rebate record validity (Payout period) - 12 months.


- Previous Rebate - Rebate value based on sales from the previous period (Payout Period - 12 months) and current conditions.
- Current Baseline Value - Baseline Value of current rebate record validity.
- Current Rebate - Rebate value for the current period.
- Forecast Baseline Value - Forecast sales for the current period.
- Forecast Rebate - Rebate value for the current period.

Rebate Calculation

When a rebate agreement is created, the rebate logic will generate rebate records based on the payment periods. We need to run a rebate calculation to calculate data for the rebate records. The RebateManager Template provides a job "RR_Calculation" to run the calculation. This job runs every midnight (can be modified).

For details see [Rebate Calculations](#).

Rebate Allocation

 To allocate a rebate value into the transaction Datamart, Datamart must have a column named 'Rebates'.

The RebateManager Template provides a Data Load named "Rebate allocation" to run the allocation. This job runs every midnight (can be modified). It then overrides the rebate value.

To calculate rebate allocation, you need data from Rebate Records (RR) and you need to meet these requirements:

- Agreement Status == Approved
- Status == Approved
- Start Date (RR) >= StartDate (Feeder Formula in Rebate Allocation DL)
- End Date (RR) <= EndDate (Feeder Formula in Rebate Allocation DL)
- Applies to Customer Grouping, Customer and Product Grouping, Product

The formulas apply for each transaction in Datamart:

- $\text{Rebates} = (\text{invoiceValue of a transaction in Datamart} / \text{current baseline value of rebate record}) * \text{rebate value of rebate record}$

Rebate allocation will only use the Advanced Configuration Options as implemented. The rebate logic will by default use the definition in Advanced Configuration, but if there is a definition on the rebate type level, it has priority.

Examples of PDF reports:

- Rebate Agreement PDF Report
 - Displays all details of a rebate type such as Product Group, Targets and Rebate. [R-19_1583402736802_RA.pdf.pdf](#)
- Last Month Rebate PDF Report
 - Overview of rebates paid in the last closed month. Each line identifies: rebate type, achieved Baseline value and the rebate to pay. [R-19_1583402760679_Last Month.pdf.pdf](#)
- MTD (Month-To-Date) Rebate PDF Report
 - Exports the achieved rebate value for MTD (month-to-date) of payable rebates in the current month. Rebate lines display details about the rebate type baseline value and rebate value for

a given month.

[R-19_1583402776744_MTD.pdf.pdf](#)

- YTD (Year-To-Date) Rebate PDF Report
 - Overview of the achieved and paid rebates YTD.
[R-19_1583402794731_YTD.pdf.pdf](#)

Rebate Approval Workflow

Rebate Agreement Approval Workflow

The workflow logic for a rebate agreement should be set up as shown below:

```
1 if (api.isSyntaxCheck()) return
2 libs.ApprovalWorkflow.ApprovalWorkflow.getApprovalWorkflow("Rebates",workflow,rebateagreement)
3
```

Example for a condition setup:

Workflow Type ^	Step ID	Condition ID	Condition Description	Condition	Skip
Rebates	1	1	Check if Current Rebate > 100000	line.CurrentRebate > 40000	NO
Rebates	2	1	Check if Current Rebate < Previo...	line.CurrentRebate < line.PreviousRebate	NO
Rebates	3	1	Check Single Target Amount	rebateType == "Single Target Amount" && (line.Target <= 20000 OR line.Rebate >= 150)	NO
Rebates	4	1	Check Single Volume Total Percent	rebateType == "Single Volume Total Percent" && "line.Rebate %" > 0.1	NO
Rebates	5	1	Check if Current Rebate = 0	line.CurrentRebate == 0	NO
Rebates	6	1	Watcher if Target For is Annual a...	line.Display_RebateTypeInfo_TargetFor == "Annual" && line.Display_RebateTypeInfo_PaymentPeriod == "Semi-Annually"	NO

If input/output is not used, you do not need use the prefix 'line.' or 'header.'; only use elementName == "Condition".

Suggested conditions:

- rebateType = "Single Target Amount"

Input:

- line.Target
- line.Rebate
- "line.Rebate %"
- line.Increment
- "line.Target Quantity"
- "line.Rebate Per Unit"
- line.PaymentPeriod

Output:

- line.PreviousRebate
- line.CurrentRebate
- line.Display_RebateTypeInfo_TargetFor
- line.Display_RebateTypeInfo_RebateFormulas
- line.Display_RebateTypeInfo_PaymentPeriod
- line.Display_RebateTypeInfo_PayTo

Rebate Record Approval Workflow

The workflow logic for a rebate record should be set up as shown below:

```

1 if (api.isSyntaxCheck()) return
2 libs.ApprovalWorkflow.ApprovalWorkflow.getApprovalWorkflow("RebateRecord",workflow,rebaterecord)
3

```

When the condition in PP "ApprovalCondition" is set up, we use an attribute code for the rebate record attribute and we do not need to add the prefix "folder." or "line."

To check the approvals for Rebate Records, you must approve the Rebate Agreement first.

Example:

<input type="checkbox"/>	Workflow Type	Step ID	Condition ID	Condition Desc...	Condition	Skip	Attr. 4	Attr. 5
<input type="checkbox"/>	RebateRecord	1	1	Check Rebate	attribute2 > 5000	NO		

Rebate Management - Accrual Forecast

The Accrual Forecast extension of Rebate Management Package allows you to create simple and flexible accrual forecast and true-up.

Forecasting is done at the rebate contract level for a customer for the duration of the contract; this forecasts the rebate for that customer and the accrual for the accrual account.

Key points:

- Leverages the existing forecasting.
- Creates simple seasonality & flat forecasting.
- Creates accruals for the agreement duration.
- Simple true-up.
- Parameterized and easy to extend.

In this section:

- [Input](#)
- [Calculations](#)
 - [Accrual Forecast](#)
 - [True-up](#)
- [Output](#)
 - [Summaries](#)
 - [Accrual Comparison Chart](#)
 - [This Year's Sales Forecast Table](#)
 - [This Year's Sales Forecast Chart](#)
 - [This Year's Quantity Forecast Table](#)
 - [This Year's Quantity Forecast Chart](#)

Input

Forecast Type

Forecast Type:

Accrual Method:

Sales Goal Increase %:

Name	Values	Section
Forecast Type	Rebate Forecast Accrual Forecast	Header
Accrual Method	Seasonal Naive Average	Header
Sales Goal Increase %	A number	Header
Forecast Interval <i>(= payment period of the particular Line Item)</i>	Monthly Quarterly Semi-Annually Annually	Line Item

Note: If you select Accrual Forecast as Forecast Type, it displays both output rebate forecast and accrual forecast on the header and line item level.

Calculations

Accrual Forecast

Forecast for particular Line Items in Rebate Agreement is calculated for an interval relevant to the Forecast Interval input (= payment period of the particular Line Item).

Formulas below are shown for the monthly interval case and are dependent on a selected Accrual Method.

Accrual Method	Accrual Forecast Baseline Calculation
Seasonal Naive Method	<p>This year's accrual forecast for a month: adjust the corresponding month's revenue from last year up/down by the sales goal and use the seasonal naive approach.</p> <p>Formula for particular months of the year: This Year Accrual Month X = (Last Year Revenue Month X) * (1 + Sales Goal Increase %)</p>
Average Method	<p>This year's accrual forecast for a month: adjust last year's total revenue up/down by the sales goal and use the average method for flat accruals forecast.</p> <p>Formula for particular months of the year: This Year Accrual Month = (Last Year Revenue Month 1 + ... + Revenue Month 12) / (number of months) * (1 + Sales Goal Increase %) <i>(see Note no. 3 below)</i></p>

Notes:

1. This year = contract validity period (Start Date and End Date or Rebate Agreement)
2. Last year = contract validity period decreased by one year

3. For the Start/End Dates which are not set for the beginning/end of a month, the result value is calculated as the percentage of the value for particular month. This percentage is given by the percentage of the number of days within that month.

For example: the calculated value for September is 500, the End Date = 15th of September (which has 30 days), then the percentage is 50%, so the final value is 50% of 500 which is 250.

For the following Rebate Types the formulas inputs is Volume (not Revenue as it is for the other types):

- Single Volume Total Amount
- Single Volume Total Percent
- Single Volume Per Unit

Once the Accrual Forecast baselines are calculated according to the particular Rebate Type, the relevant Rebate calculation is applied with the Accrual Forecast Baseline as its input.

Location

- Rebate Agreement - All the particular Accrual Forecasts for all the included periods (monthly, quarterly, semi-annually or annually) are saved in the Rebate Agreement with the Line Item.
- Rebate Records - The particular forecast for the particular period is included in the columns of the Rebate Record for the particular period.

True-up

The True-up amount is the Accrual Forecast minus the Current Rebate.

Calculation

True-Up = Accruals Forecast for a given period - Current Rebates for a given period

Example for a quarterly period:

True-Up = Accruals Forecast (M1 + M2 + M3) - Current Rebates (M1 + M2 + M3)

Location

- Rebate Agreement - All the particular True-ups for all the included periods (monthly, quarterly, semi-annually or annually) are saved in the Rebate Agreement with the Line Item.
- Rebate Record - The particular True-up for particular period is included in the columns of the Rebate Record for the particular period.

Output

All the outputs are presented in the Calculation Results section of the Rebate Agreement at both Header and Line Item level:

- Line Item - The data is displayed on the basis of the selected payment period of each Line Item.
- Header - The data is always displayed on monthly basis. In case of quarterly, semi-annually or annually intervals, to get the values for particular months the quarterly, semi-annually or annually values are divided by actual amount of months: either 3 (quarterly), 6 (semi-annually) or 12 (annually).

Example:

- Case 1: Start Date = 01/01/2020; End Date = 31/12/2020; Q1 contains M1, M2, M3; Value of Q1 = 3,750

then value of M1 = M2 = M3 = $3,750 / 3 = 1,250$

- Case 2: Start Date = 01/02/2020; End Date = 31/12/2020; Q1 contains M2, M3; Value of Q1 =

3,750

then value of M2 = M3 = $3,750 / 2 = 1,875$

- Case 3: Start Date = 01/03/2020; End Date = 31/12/2020; this year contains 10 months; Value of this year = 3,750 then value of each months in this year = $3,750 / 10 = 375$

Summaries

Rebate Agreement Header

The summaries of the following Line Items outputs are presented in the Calculation Results section in the Header of the Rebate Agreement as a summary of all of these.

Calculation Results	
Rebate Detail	
Previous Rebate	9,749
Current Rebate	7,839
Rebate Forecast	
Rebate Forecast	8,229
Accrual Forecast	
Accrual Forecast	10,907
True-up	3,068
Accrual Comparison Chart	Show
This Year's Sales Forecast Table	Show
This Year's Sales Forecast Chart	Show
This Year's Quantity Forecast Table	Show
This Year's Quantity Forecast Chart	Show

Output	Value Type	Notes
Accrual Forecast	Rebate Value	
True-up	Rebate Value	
Accrual Comparison Chart	Rebate Value	
This year's Sales Forecast Table	Baseline Revenue	Active/visible only when Line Items contain Revenue Rebate Type

This year's Sales Forecast Chart	Baseline Revenue	Active/visible only when Line Items contain Revenue Rebate Type
This year's Quantity Forecast Table	Baseline Quantity	Active/visible only when Line Items contain Volume Rebate Type
This year's Quantity Forecast Chart	Baseline Quantity	Active/visible only when Line Items contain Volume Rebate Type

Line Item Header

The following outputs for the particular periods are presented in the Calculation Results section in the each of the Line Item as a summary of all of these.

Calculation Results	
Rebate Detail	
Baseline Value Field Label	Invoice Price
Previous Baseline Value	16,349
Current Baseline Value	7,563
Previous Rebate	72
Current Rebate	36
Rebate Forecast	
Forecast Baseline Value	10,556
Rebate Forecast	60
Accrual Forecast	
Accrual Forecast Baseline Value	17,984
Accrual Forecast	84
True-up	48
Accrual Comparison Chart	Show
This Year's Sales Forecast Table	Show
This Year's Sales Forecast Chart	Show

▼ **Rebate Detail**

Baseline Value Field Label	Invoice Price
Baseline Quantity Field Label	Quantity
Previous Baseline Value	16,349
Current Baseline Value	7,563
Previous Baseline Quantity	1,532
Current Baseline Quantity	2,110
Previous Rebate	34
Current Rebate	34

▼ **Rebate Forecast**

Forecast Baseline Value	10,556
Forecast Quantity	2,390
Rebate Forecast	34

▼ **Accrual Forecast**

Accrual Forecast Baseline Value	17,984
Accrual Forecast Quantity	1,685
Accrual Forecast	34
True-up	0
Accrual Comparison Chart	Show
This Year's Quantity Forecast Table	Show
This Year's Quantity Forecast Chart	Show

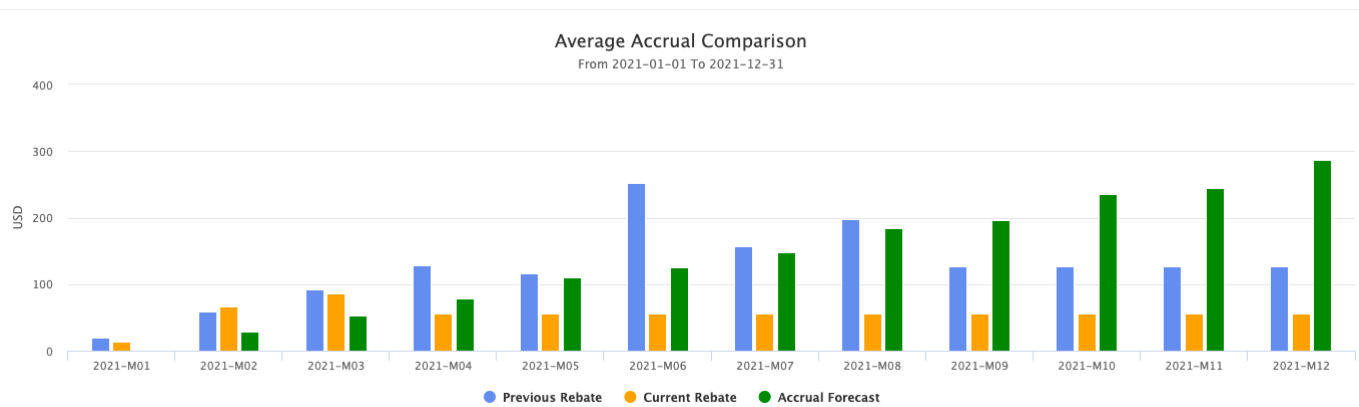
Output	Value Type	Notes
Accrual Forecast Baseline Value	Baseline Revenue	
Accrual Forecast Quantity	Baseline Quantity	Active/visible only when Line Items contain Volume Rebate Type
Accrual Forecast	Rebate Value	
True-up	Rebate Value	
Accrual Comparison Chart	Rebate Value	
This year's Sales Forecast Table	Baseline Revenue	

		Active/visible only when Line Items contain Revenue Rebate Type
This year's Sales Forecast Chart	Baseline Revenue	Active/visible only when Line Items contain Revenue Rebate Type
This year's Quantity Forecast Table	Baseline Quantity	Active/visible only when Line Items contain Volume Rebate Type
This year's Quantity Forecast Chart	Baseline Quantity	Active/visible only when Line Items contain Volume Rebate Type

Accrual Comparison Chart

A bar chart displaying Previous Rebate vs. Current Rebate vs. Accrual Forecast.

Accrual Comparison Chart



- Previous Rebate - Previous rebate per the previous relevant period (monthly, quarterly, semi-annually or annually) in Rebate Records.
- Current Rebate - Current rebate per the current relevant period (monthly, quarterly, semi-annually or annually) in Rebate Records.
- Accrual Forecast - Calculated Accrual Forecast in the Rebate Agreement (for the particular Rebate Type).

The data is displayed for the contract validity period (Start Date - End Date in Rebate Agreement).

This Year's Sales Forecast Table

The table displaying this year's sales forecast by Payment Period of the particular line item. The example below is Monthly.

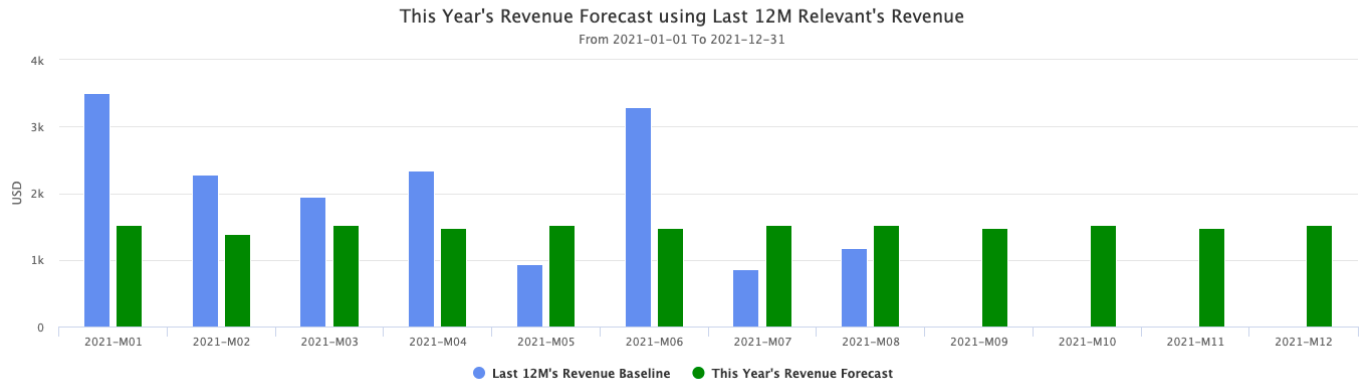
This Year's Sales Forecast Table

	2021-M01	2021-M02	2021-M03	2021-M04	2021-M05	2021-M06	2021-M07	2021-M08	2021-M09	2021-M10	2021-M11	2021-M12
Last 12M's Revenue Baseline	3,509	2,277	1,953	2,347	936	3,295	858	1,174	0	0	0	0
This Year's Revenue Forecast	1,530	1,382	1,530	1,481	1,530	1,481	1,530	1,530	1,481	1,530	1,481	1,530

This Year's Sales Forecast Chart

A bar chart displaying this year's sales forecast by Payment Period of the particular line item. The example below is Monthly.

This Year's Sales Forecast Chart



This Year's Quantity Forecast Table

A table displaying this year's quantity forecast by Payment Period of the particular line item. The example below is Monthly.

This Year's Quantity Forecast Table

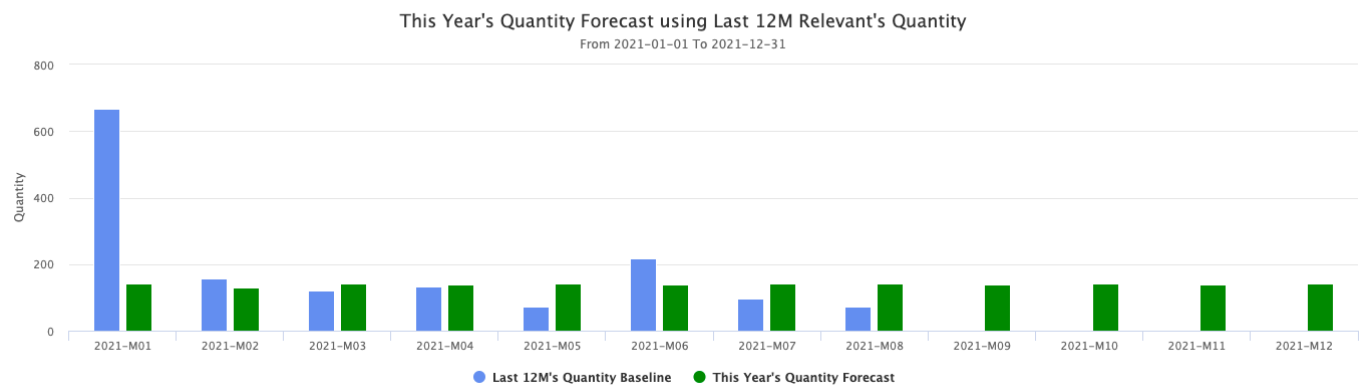


	2021-M01	2021-M02	2021-M03	2021-M04	2021-M05	2021-M06	2021-M07	2021-M08	2021-M09	2021-M10	2021-M11	2021-M12
Last 12M's Quantity Baseline	668	156	120	132	72	216	96	72	0	0	0	0
This Year's Quantity Forecast	143	130	143	139	143	139	143	143	139	143	139	143

This Year's Quantity Forecast Chart

A bar chart displaying this year's quantity forecast by Payment Period of the particular line item. The example below is Monthly.

This Year's Quantity Forecast Chart



Rebate Management Package Release Notes

- [Rebate Management Package 1.2.0](#)
- [Rebate Management Package 1.1.2](#)
- [Rebate Management Package 1.1.1](#)
- [Rebate Management Package 1.1.0](#)

Rebate Management Package 1.2.0

- [Release Highlights](#)
- [New Features](#)
- [Improvements](#)
- [Bugs](#)

Release Highlights

Accrual Forecasting

Flexible accruals forecasting and true-up was added into the package for Rebate Agreement with a set of portlets on a new dashboard.

Forecasting is done at the Rebate Agreement level for a customer for the duration of the contract and forecasts the rebate for that customer and the accrual for the accrual account.

Dashboards Package

Rebate Dashboards were separated into a new Accelerator Package together with mapping options which were separated.

New Features

[PFPCS-1618](#) Accrual Forecast

Improvements

[PFPCS-4352](#) Rebate dashboards separated into a new package.

[PFPCS-4351](#) Configuration object and context map improvements were implemented.

[PFPCS-2735](#) Updated function RebateManager.Util.getPayoutPeriods base on datasource calculation.

[PFPCS-4349](#) Filter "Date From" shows an asterisk (mandatory sign).

[PFPCS-3353](#) Dashboards - Aligned value and add whitespace in tooltips.

[PFPCS-3226](#) Dashboards - Accrual Comparison Chart - Changed label in tooltips.

[PFPCS-3223](#) Dashboards - Replaced currency code with the currency symbol.

[PFPCS-3222](#) Dashboards - YTD Rebate Data - Added volume to the table overview.

[PFPCS-3221](#) Dashboards - YTD Rebate - Changed a chart type to Bar chart and the target (Accrual Forecast) is displayed.

[PFPCS-3220](#) Dashboards - YTD Rebate by Agreement - Added Target for each agreement.

[PFPCS-3208](#) Dashboards - Changed "Qty." into full name Quantity.

[PFPCS-3192](#) Dashboards - Unified color condition for Accrual Forecast.

[PFPCS-2854](#) Dashboards - Dynamic title is generated in Accrual Comparison Chart based on Accrual Method selection.

[PFPCS-2787](#) Dashboards - Added subtitle and tooltip about the time range.

[PFPCS-1537](#) Dashboards - Chart names and portlet headers were made consistent for all rebate dashboards.

[PFPCS-1464](#) Dashboards - Time period "Semi-annually" has data in the chart.

Bugs

[PFPCS-5023](#) "null" is displayed if the currency symbol is not in CurrencySymbols PP.

[PFPCS-5017](#) YTD rebate reports are displaying 0 instead of real values.

[PFPCS-5016](#) MTD rebate report does not show any records.

PFPCS-5015 Customer Rebate Dashboard - Shows an error for an outdated key name.

PFPCS-5013 Incorrect rebate value in the Last Month Report.

PFPCS-5012 Thousand separators are missing in rebate reports.

PFPCS-4976 Customer Selection with Header Level does not work.

PFPCS-4957 Incorrect rebate values if Rebate Formulas is Cumulative.

PFPCS-4951 Error displayed if StartDate and EndDate are identical.

PFPCS-4941 Incorrect time period is displayed in a tooltip of charts.

PFPCS-4940 Axis Y label is incorrect when rebate type is volume.

PFPCS-4923 Rebate values are incorrect when Target For is set to Annual.

PFPCS-4914 Rounding to decimals is missing in rebate records.

PFPCS-4913 Single Increment Growth Amount/Percent - Rebate Forecast calculation is incorrect.

PFPCS-4911 Rebate header texts require corrections.

PFPCS-4910 Incorrect baseline value was provided when the payment period is not Monthly.

PFPCS-4865 defaultRebateFieldName was updated in configManager.

PFPCS-4594 YTD By Rebate Type Dashboard - The "To" date should show today instead of the end of the month.

PFPCS-4593 Rebate Agreement Dashboard - Rebate is displayed empty when a Rebate Record is approved.

PFPCS-4591 Customer Rebate Dashboard - A message "ERROR(@497): Cannot access first() element from an empty List" is displayed for date inputs.

PFPCS-4576 Rebate Agreement Dashboard - Incorrect value is displayed in YTD Rebate By Time Period.

PFPCS-4575 Customer Rebate Dashboard - A title is missing when having empty data in the Datamart.

PFPCS-4574 Customer Rebate Dashboard - Incorrect value displayed in a chart.

PFPCS-4491 Rebate Agreement Dashboard - Incorrect value displayed if not found end date.

PFPCS-4468 YTD By Rebate Type Dashboard - Forecast Rebate name is swapped in the Value input.

PFPCS-4463 Rebate Agreement Dashboard - Wrong Axis X value is displayed for chart YTD Rebate.

PFPCS-3724 YTD By Rebate Type Dashboard - Currency sign is displaying incorrectly.

PFPCS-3717 Message "ForecastBaselineValue [via Util] : ERROR(@1364): Division undefined" is shown.

PFPCS-3418 Deployment script (step.json) validation failed.

PFPCS-3372 Customer Rebate dashboard - Date From, Date To, Customers,... are visible in the "Add Portlet" menu.

PFPCS-3371 Rebate Agreement Dashboard - Texts overlap in YTD Rebate chart.

PFPCS-3370 Dashboards - Time Period and Constants are visible in the "Add Portlet" menu.

PFPCS-3358 Dashboards - Some values are not compliant with the US number formatting style.

PFPCS-3352 Dashboards - Highchart credits are displayed in the corner of portlets.

PFPCS-3251 End Date is included when we get value for the Previous period.

PFPCS-3191 Average Method - Incorrect value displayed in This Year's Quantity Forecast Table/Chart on the header.

PFPCS-3190 Average Method - Incorrect value displayed in Accrual Comparison Chart on the header.

PFPCS-3180 The revenue value of volume rebate types is included in This Year's Sales Forecast Table /Chart on the header.

PFPCS-3138 YTD By Rebate Type Dashboard - Redundant EUR is shown in a tooltip.

PFPCS-3108 Accrual Comparison Chart - Total value on Header is not equal to the total of all line items.

PFPCS-3082 Forecast Type, Accrual Method and Sales Goal Increase % fields are missing in results when calculating in Rebate Record detail.

PFPCS-3080 Accrual Method and Forecast Type displayed with dashes instead of whitespace in Rebate Records.

PFPCS-3079 Accrual Forecast Baseline Value and Accrual Forecast are incorrect in Rebate Records for each time period.

PFPCS-3066 Documentation is missing information that Rebate Record calculation can be switched to incremental mode.

PFPCS-3064 Accrual Forecast - The value is not aligned and whitespace is missing in a tooltip.

[PFPCS-3063](#) Seasonal Naive - Incorrect value is shown in This Year's Sales Forecast Table/Chart.
[PFPCS-2999](#) payoutDays variable is String type instead of Integer.
[PFPCS-2853](#) Error occurs if the user inputs a wrong value type.
[PFPCS-2852](#) Previous Sales Goal Increase % is displayed when switching Accrual Method.
[PFPCS-2851](#) Planned Accrual is not correct in the Accrual Comparison chart on the header.
[PFPCS-2838](#) Average Method does not provide results.
[PFPCS-2832](#) Last Year description was shown instead of Last 12 Months.
[PFPCS-2734](#) Rebate Detail output shows incorrect results if the end date is less than half a year and the Payment Period is Semi-Annually.

Rebate Management Package 1.1.2

Bugs

- [[PFPCS-2721](#)] - Display Customer Rebate Dashboard portlets
- [[PFPCS-3050](#)] - Update deployment script to fix validation of PM for Rebate Package

Rebate Management Package 1.1.1

Tasks

- [[PFPCS-2422](#)] - Set up autopublishing for Rebates package
- [[PFPCS-2581](#)] - Introduce automatic package version updating

Rebate Management Package 1.1.0

- [Fixed Bugs](#)
- [Tasks](#)
- [Improvements](#)

Fixed Bugs

- [[PFPCS-1182](#)] - Duplicate Target line in PDF RA Template
- [[PFPCS-1191](#)] - Customer Rebate Dashboard_Not show chart if time range are 366 days
- [[PFPCS-1213](#)] - Customer Rebate Dashboard_Incorrect previous baseline value, quantity if current year don't have that data
- [[PFPCS-1244](#)] - Customer Rebate Dashboard_Show 0 on axis X time period
- [[PFPCS-1287](#)] - Incorrect when calculate YTD Rebate by Rebate Type dashboard

Tasks

- [[PFPCS-1211](#)] - Update revised PDF rebate report
- [[PFPCS-1282](#)] - Change label of YTD by Rebate Type dashboard

Improvements

- [[PFPCS-1151](#)] - Could Not generate PayTo if CustomerSelection = "Line Item Level" in AP setting and CustomerSelection = "Header Level" in rebate type
- [[PFPCS-1173](#)] - Remove default value in rebate type attributes
- [[PFPCS-1183](#)] - Stepped Amount_Target is not sorted in PDF RA Template
- [[PFPCS-1190](#)] - RA dashboard_Show No data to display for Rebate 2020

- [[PFPCS-1245](#)] - Change calculation of % Baseline value, Quantity, Rebate
- [[PFPCS-1290](#)] - RA Dashboard_Change calculate for YTD Rebate 2020 chart

Note: For every deployment, you should go to Classic UI Administration Dashboards choose rebate dashboards settings refresh the logic and click Save. Then Unity will be updated with a new deployment.